

# MAESTA

YOUR HOME, YOUR GRANDEUR



CRC is a name that is widely recognised for delivering more than what is promised. Our reputation is built on a solid foundation of trust, transparency, and reliability. Backed by a skilled and experienced team, we have established ourselves as one of the leading developers in the real estate industry.

Known for serving a long list of clientele, CRC has grown exponentially over the past 38 years. With thoughtfully designed layouts and timely executed projects, we always think ahead, prioritising our customers' satisfaction. The Group is committed to setting new standards in the realty sector by unveiling the finest structures, which have been and will be a true reflection of perfection and excellence.

## VISION

CRC aims to be a highly dedicated customer-driven real estate company and, to be one of the top 5 market leaders in terms of timely and quality delivery along with creating sustainable masterpieces that are well crafted efficient spaces for our valued stakeholders.

## MISSION

To attain nationwide leadership in the real estate industry when it comes to performance, business transparency, ethical practices and environment-conscious development.

YOUR PICTURE PERFECT

MOMENTS

WHERE EVERY MOMENT RISES TO  
A PORTRAIT OF PERFECTION



MOMENTS, WHERE LIFE FINDS ITS  
PUREST EXPRESSION



A SPACE THAT CREATES  
NEW MEMORIES



A BESPOKE CANVAS FOR  
THE DISCERNING FEW

MAESTA  
YOUR HOME, YOUR GRANDEUR



WELCOME TO THE STORIES THAT  
PRESERVE YOUR MOMENTS

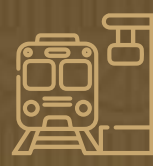


**Disclaimer:** The pictures/images and perspective views of the premises/building/layout/design are an artist's impression and for representational purposes only and are not a part of actual deliverables. Actual features, specifications and design may vary.

# LOCATED IN NOIDA'S MOST COVETED NEIGHBOURHOOD



**SCHOOLS**  
5 MINS\*



**METRO STATION**  
10 MINS\*



**FORTIS HOSPITAL**  
10 MINS\*



**MALL OF INDIA**  
15 MINS\*



**DND**  
18 MINS\*



**ANAND VIHAR ISBT**  
20 MINS\*



**AKSHARDHAM**  
30 MINS\*



**NOIDA INTERNATIONAL AIRPORT**  
30 MINS\*

[CLICK HERE FOR THE LOCATION](#)



MAP NOT TO SCALE

Disclaimer: All distances are approximate, and the time required to cover these distances is based on normal traffic conditions. Actual travel time may vary depending on traffic and time of day.





# ARCHITECTURAL BRILLIANCE THAT MAKES A MARK

**Disclaimer:** The pictures/images and perspective views of the premises/building/layout/design are an artist's impression and for representational purposes only and are not a part of actual deliverables. Actual features, specifications and design may vary.

# CRAFTED FOR HOLISTIC LIVING

ACRES OF LUSH  
GREENS FOR SERENE  
NATURE LIVING

FIVE MAJESTIC  
TOWERS PIERCING  
THE SKY

EXCLUSIVITY WITH 2  
APARTMENTS\* PER FLOOR,  
ENSURING UTMOST COMFORT  
AND PRIVACY

EXQUISITE LOBBY  
WITH 3 HIGH-SPEED  
ELEVATORS

FULLY LANDSCAPED  
GROUND LEVEL FOR  
EVERYONE

270° VIEWS OF LUSH  
GREEN LANDSCAPE  
AND THE CLUB

NO VEHICULAR ZONE  
ENSURING SEAMLESS  
TRAFFIC MOVEMENT

STATE-OF-THE-ART  
CLUBHOUSE WITH  
A HOST OF AMENITIES

DIVERSE POOL AREAS  
DESIGNED TO SUIT YOUR  
EVERY CHOICE AND MOOD

# A MAJESTIC LIFE BLOOMS WHEN IT'S NURTURED AMIDST NATURE

 SEAMLESS PATHWAYS (NO VEHICULAR ZONE)

 MULTI-PURPOSE COURT

 OUTDOOR GYM

 REFLEXOLOGY PATH

 WOODLAND BRIDGE

 YOGA/MEDITATION LAWN

 KIDS LAWN

 COLOUR GARDEN

 BUTTERFLY GARDEN

 HERB GARDEN

 RAISED GARDEN

 ZEN GARDEN



STOCK IMAGE

BE MOVED BY THE ALLURE OF  
CRAFTED LANDSCAPE



# NAVIGATE THROUGH THE PATH PAVED AMIDST THE GREENS

Maesta is designed to provide sheer comfort at every step. Our buggy-friendly pathways offer a safe and welcoming space for the elderly and children, allowing everyone the freedom to move at their own pace.



**Disclaimer:** The pictures/images and perspective views of the premises/building/layout/design are an artist's impression and for representational purposes only and are not a part of actual deliverables. Actual features, specifications and design may vary.

# LET NATURE BE YOUR GUIDE TO A WORLD OF HARMONY



WOODLAND BRIDGE

# A WELLNESS ZONE TO SOOTHE YOUR SOUL & HEAL YOUR MIND

Whether you are seeking a balanced mind or aiming to stay in shape,  
rejuvenate both body and mind in one serene, harmonious space.



**Disclaimer:** The pictures/images and perspective views of the premises/building/layout/design are an artist's impression and for representational purposes only and are not a part of actual deliverables. Actual features, specifications and design may vary.

# FIND YOUR PERFECT FIT TO KEEP YOUR FITNESS ON TRACK

KIDS PLAY LAWN



STOCK IMAGE

MULTI-PURPOSE COURT



STOCK IMAGE

OUTDOOR GYM

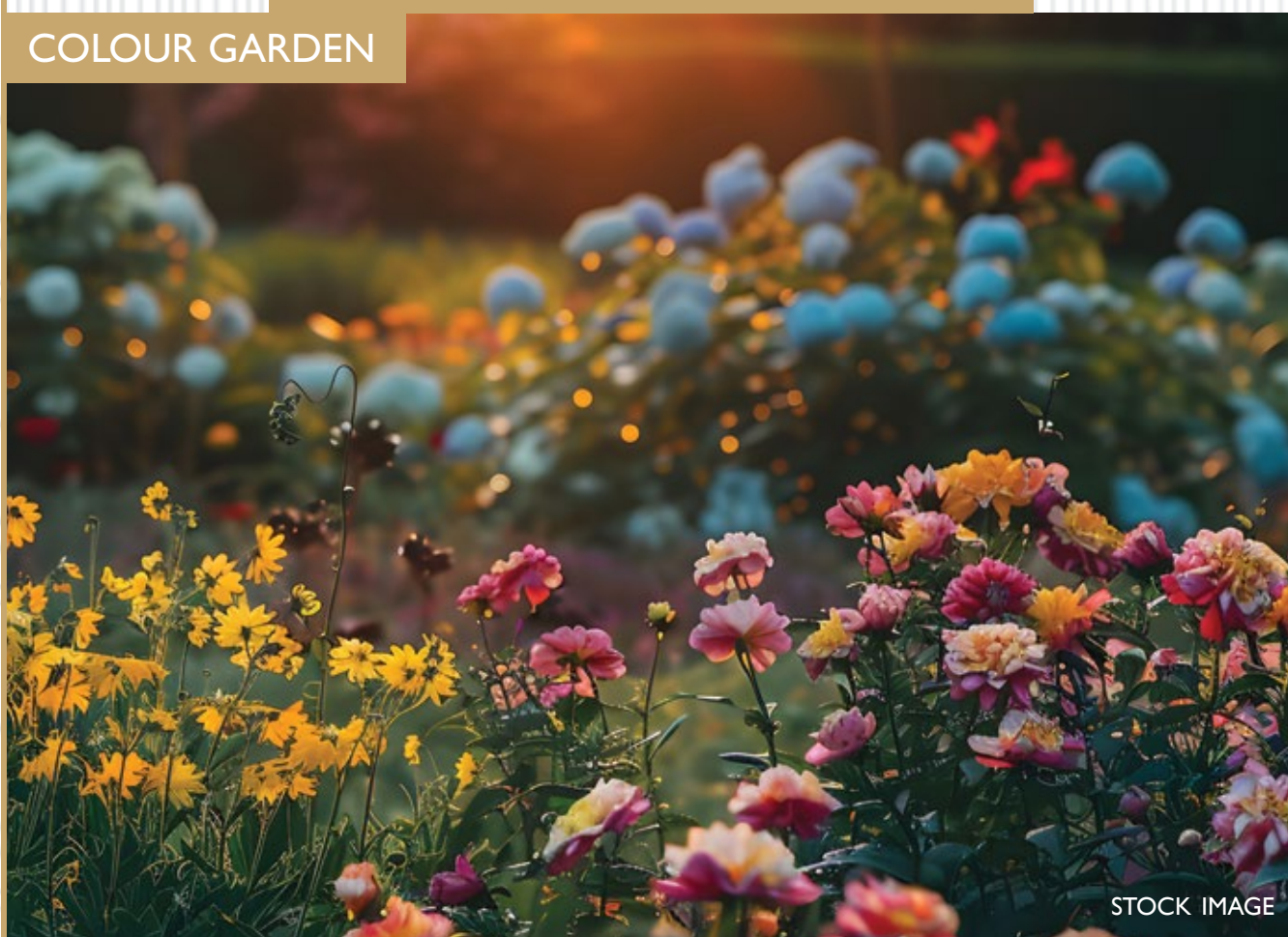


STOCK IMAGE



# FREELY RELINQUISH YOURSELF

COLOUR GARDEN



STOCK IMAGE

BUTTERFLY GARDEN



STOCK IMAGE

HERB GARDEN



STOCK IMAGE

RAISED GARDEN



STOCK IMAGE

# EMBRACE A DAY FILLED WITH JOY & VIBRANT EXPERIENCES



SWIMMING POOL



TABLE TENNIS



INDOOR POOL



SQUASH COURT



KIDS POOL



CHESS



GYMNASIUM



CARROM



YOGA ROOM



CARDS ROOM



JACUZZI



KIDS ACTIVITY ROOM



SPA



KARAOKE



SAUNA/STEAM



BUSINESS CENTRE



BILLIARDS



STOCK IMAGE

WELCOME  
TO  
CLUB MAESTA



# AN INVITING FIRST IMPRESSION THAT INSPIRES AWE AND ADMIRATION

Step into a world of elegance. High ceilings, natural light, and meticulously curated details create an environment that is both grand and inviting.



REFRESH YOUR SPIRIT WITH EVERY  
INVIGORATING SPLASH



**Disclaimer:** The pictures/images and perspective views of the premises/building/layout/design are an artist's impression and for representational purposes only and are not a part of actual deliverables. Actual features, specifications and design may vary.

# TAKE A DIP IN YOUR OWN COMFORT



# YOUR PERFECT SPOT FOR ENJOYING INDOOR GAMES



# PRECIOUS MOMENTS WITH THE LOVED ONES DESERVE A PERFECT SPACE

A warm inviting space for laughter, love, and togetherness. Experience the comfort of a homely setup in our family lounge and living room amenity, where every gathering feels like home.





# ENJOY BIG SCREEN EXPERIENCE WITH YOUR FRIENDS & FAMILY

Our state-of-the-art mini theatre is designed to turn every screening  
into an event to remember.



**Disclaimer:** The pictures/images and perspective views of the premises/building/layout/design are an artist's impression and for representational purposes only and are not a part of actual deliverables. Actual features, specifications and design may vary.

PLAY LIKE A CHAMPION,  
THE BALL IS IN YOUR COURT



# REJUVENATE THE BODY, CALM THE MIND, HEAL THE SPIRIT

MASSAGE ROOM



STEAM ROOM



SPA



STEP INTO YOUR  
PERFECT WORLD



STOCK IMAGE

WHEN YOU ASPIRE FOR  
A PICTURE PERFECT LIFE,  
THIS IS WHERE YOU ARRIVE



# MAKE YOUR FIRST IMPRESSION EVERLASTING

Steer your ins and outs with ease. Maesta prioritises pedestrian and cyclist access with a dedicated no-vehicle zone. Your comfort and convenience are paramount, with every detail meticulously curated.



# ENTER WITH GRACE AND STYLE

Each tower boasts a generously sized lobby, equipped with three high-speed elevators to whisk you to your haven effortlessly. Plush interiors create a welcoming atmosphere, setting the tone for a life of comfort and elegance.



# EXTRAORDINARY MOMENTS DESERVE AN EXQUISITE SETTING

At Maesta, the living room is designed with open floor-to-ceiling windows, so as to let the natural light come in effortlessly, making it look expansive and well-ventilated.



STOCK IMAGE



STOCK IMAGE



# DESIGNED FOR YOUR MOST RESTFUL MOMENTS

Ample sunlight and natural ventilation grace all the bedrooms. Each room exudes a personal touch of warmth, creating a masterpiece designed to cradle your dreams and chase away every worry.



STOCK IMAGE



STOCK IMAGE

# YOUR FRONT ROW SEATS TO PICTURE PERFECT VIEWS

Savour dusk and dawn with a sunny smile and your favourite coffee. Your balcony isn't just an outdoor space it's your joyful escape, where every moment brings a sense of happiness.



PLANS MASTERED  
TO PERFECTION



STOCK IMAGE

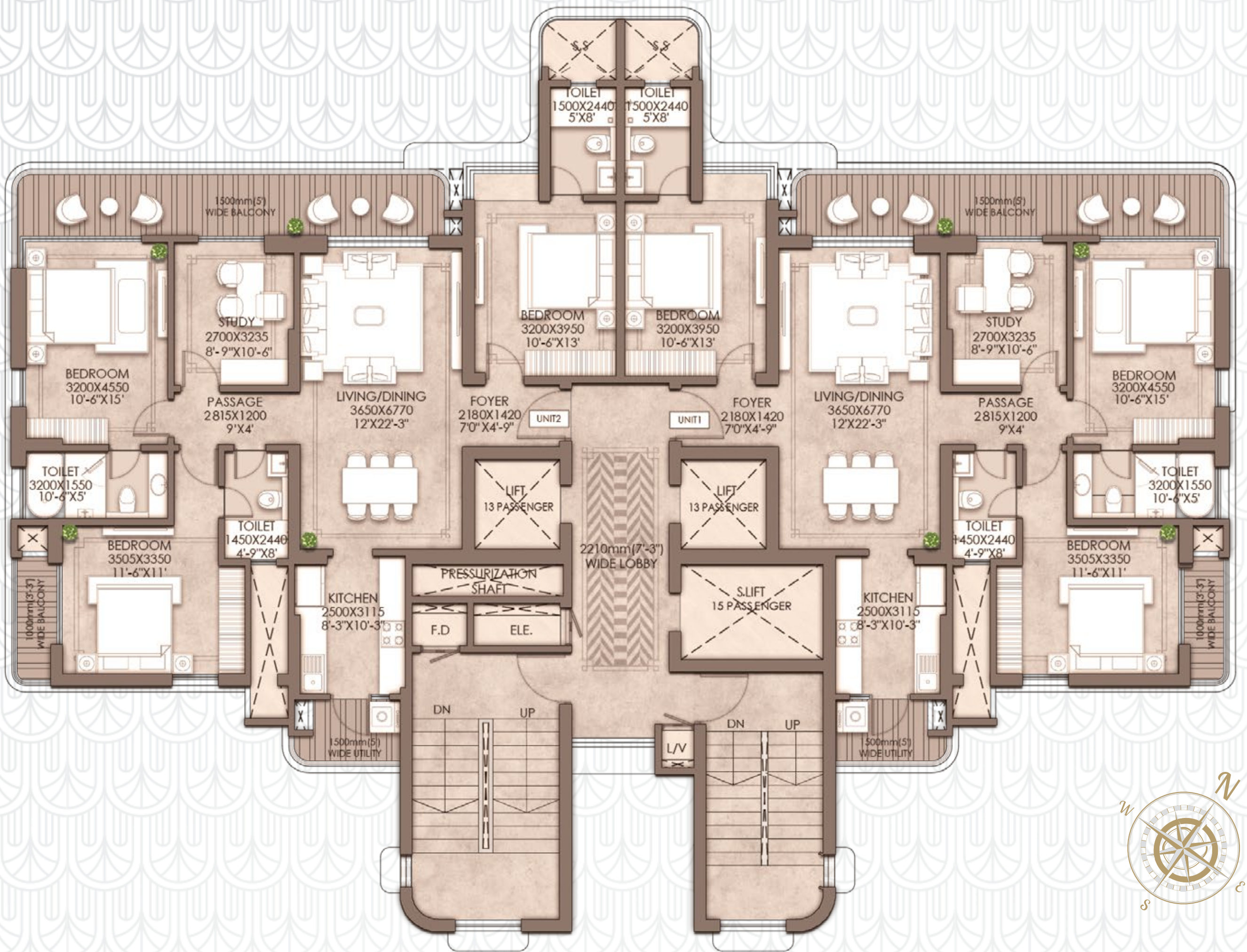
# MASTER PLAN



## LEGEND

- |                               |                            |                                |
|-------------------------------|----------------------------|--------------------------------|
| 01 - ENTRY/EXIT               | 17 - SUMMER LAWN           | 34 - ENTRY RAMP                |
| 02A - COMMERCIAL DROP-OFF     | 18 - FEATURE PLANTING      | 35 - COLOUR GARDEN             |
| 02B - RESIDENTIAL DROP-OFF    | 19 - GARDEN OF TRANQUILITY | 36 - CLUB ENTRY                |
| 03 - ENTRANCE WATER FEATURE   | 20 - YOUTH LAWN            | 37 - WATER CASCADE             |
| 04 - ENTRANCE PLANTING        | 21 - SLOPING GREENS        | 38 - SWIMMING POOL & KIDS POOL |
| 05 - CLUB WATER FEATURE       | 22 - COMMERCIAL PLAZA      | 39 - CLUB                      |
| 06 - ENTRANCE FEATURE CANOPY  | 23 - TEXTURE GARDEN        | 40 - EXIT RAMP                 |
| 07 - STILT LANDSCAPE          | 24 - RAISED DECK SEATING   | 41 - EDGE PLANTING             |
| 08 - CARTWAY / PATHWAY        | 25 - KIDS PLAY AREA        | 42 - SEATING DECK              |
| 09 - AROMATIC GARDEN          | 26 - POOL VANTAGE DECK     | 43 - ELEVATED WALK             |
| 10 - WINTER LAWN              | 27 - STEPS TO UPPER GARDEN | 44 - ELEVATED PAVILION         |
| 11 - MULTI PURPOSE COURT      | 28 - KIDS PLAY LAWN        | 45 - REFLEXOLOGY               |
| 12 - OUTDOOR GYM              | 29 - HERB GARDEN           | 46 - DRY GARDEN                |
| 13 - TOWER ENTRY              | 30 - FEATURE WALL          | 47 - LAWN                      |
| 14 - YOGA AND MEDITATION LAWN | 31 - AMPHITHEATRE          | 48 - TERRACE LANDSCAPE         |
| 15 - MOUND                    | 32 - BUTTERFLY GARDEN      | 49 - FITNESS GARDEN            |
| 16 - GREEN TAPESTRY           | 33 - CENTRAL LAWN          |                                |

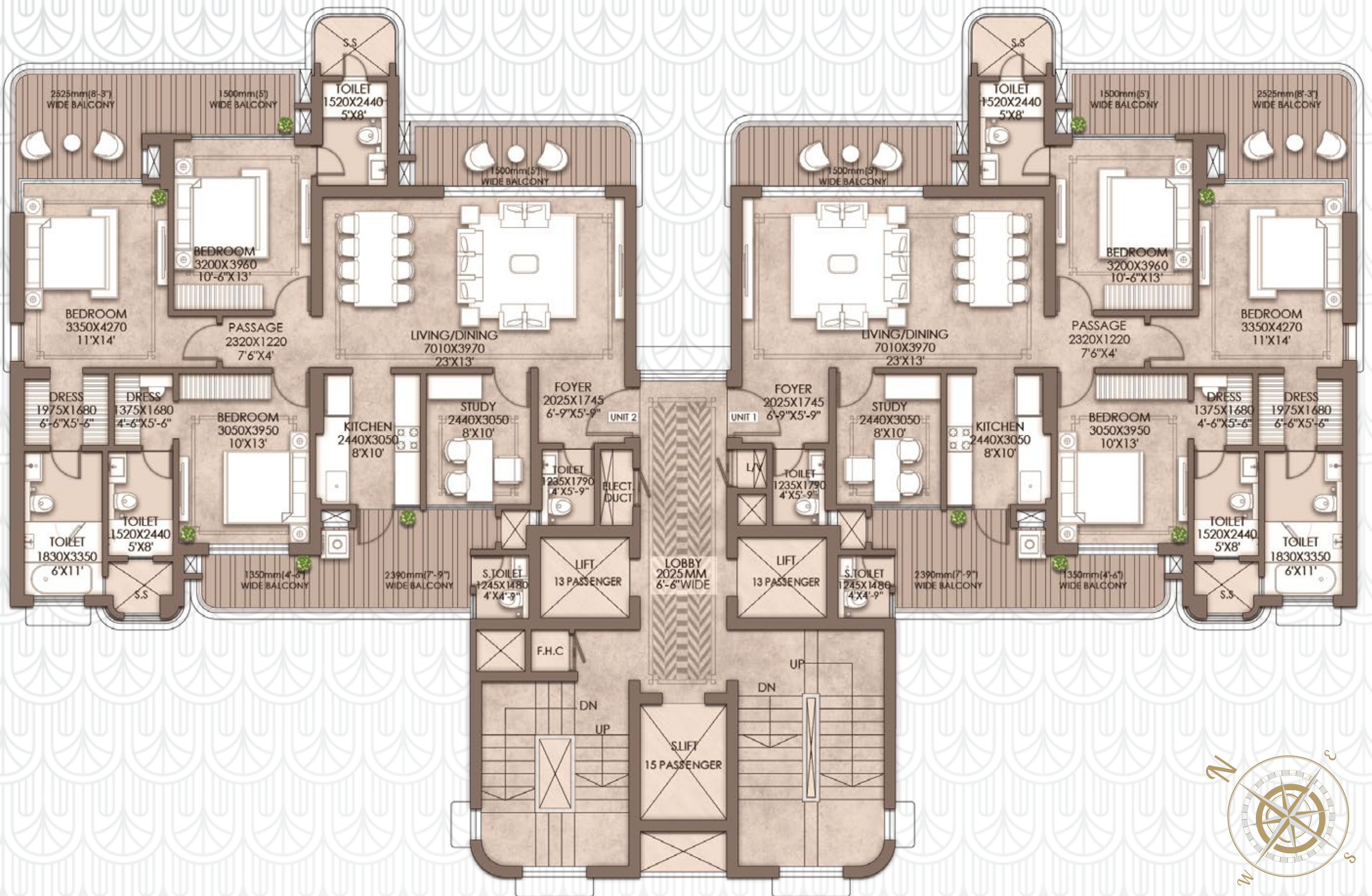
# TOWER 1



CARPET AREA = 106.65 sq.m | 1148 sq.ft  
 BUILT UP AREA = 138.42 sq.m | 1490 sq.ft

**Disclaimer :** The layouts, drawings, locations, plans, designs, details, specifications, elevations, features, amenities, facilities, services, products, equipment type, brands, images and other details depicted herein are only indicative and representative images, and Promoter reserves the right to change any or all of these in the interest of the development of the project as per applicable rules and regulations of the concerned jurisdictional competent Authority. It does not constitute an offer and/or contract of any type between the Promoter and the recipients/viewers. Any prospective sale shall be governed by the terms and conditions of the agreement for sale to be entered into between the concerned parties. Recipients/viewers are advised to exercise their wisdom in relying on the information provided and are requested to verify all information, specifications, area, amenities, services, payment plan and other relevant terms of allotment related document independently, have thorough understanding of the same and take reasoned decision before to concluding any decision for buying in the project.

# TOWER 2



CARPET AREA = 118.91 sq.m | 1280 sq.ft  
 BUILT UP AREA = 166.29 sq.m | 1790 sq.ft

**Disclaimer :** The layouts, drawings, locations, plans, designs, details, specifications, elevations, features, amenities, facilities, services, products, equipment type, brands, images and other details depicted herein are only indicative and representative images, and Promoter reserves the right to change any or all of these in the interest of the development of the project as per applicable rules and regulations of the concerned jurisdictional competent Authority. It does not constitute an offer and/or contract of any type between the Promoter and the recipients/viewers. Any prospective sale shall be governed by the terms and conditions of the agreement for sale to be entered into between the concerned parties. Recipients/viewers are advised to exercise their wisdom in relying on the information provided and are requested to verify all information, specifications, area, amenities, services, payment plan and other relevant terms of allotment related document independently, have thorough understanding of the same and take reasoned decision before to concluding any decision for buying in the project.

# TOWER 3

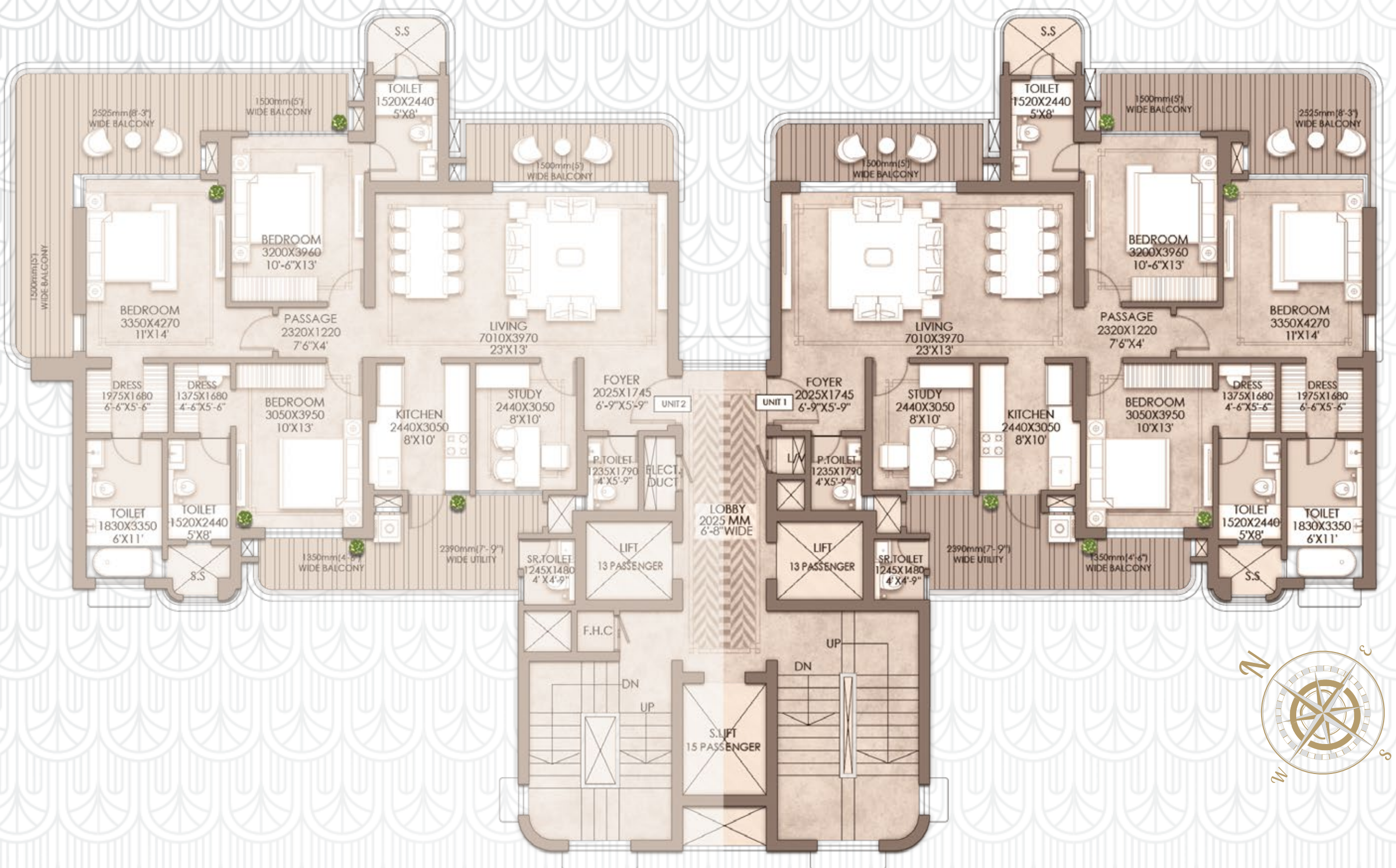


CARPET AREA = 149.29 sq.m | 1607 sq.ft  
 BUILT UP AREA = 202.06 sq.m | 2175 sq.ft

**Disclaimer :** The layouts, drawings, locations, plans, designs, details, specifications, elevations, features, amenities, facilities, services, products, equipment type, brands, images and other details depicted herein are only indicative and representative images, and Promoter reserves the right to change any or all of these in the interest of the development of the project as per applicable rules and regulations of the concerned jurisdictional competent Authority. It does not constitute an offer and/or contract of any type between the Promoter and the recipients/viewers. Any prospective sale shall be governed by the terms and conditions of the agreement for sale to be entered into between the concerned parties. Recipients/viewers are advised to exercise their wisdom in relying on the information provided and are requested to verify all information, specifications, area, amenities, services, payment plan and other relevant terms of allotment related document independently, have thorough understanding of the same and take reasoned decision before to concluding any decision for buying in the project.

# TOWER 4

## UNIT-1



CARPET AREA = 118.91 sq.m | 1280 sq.ft

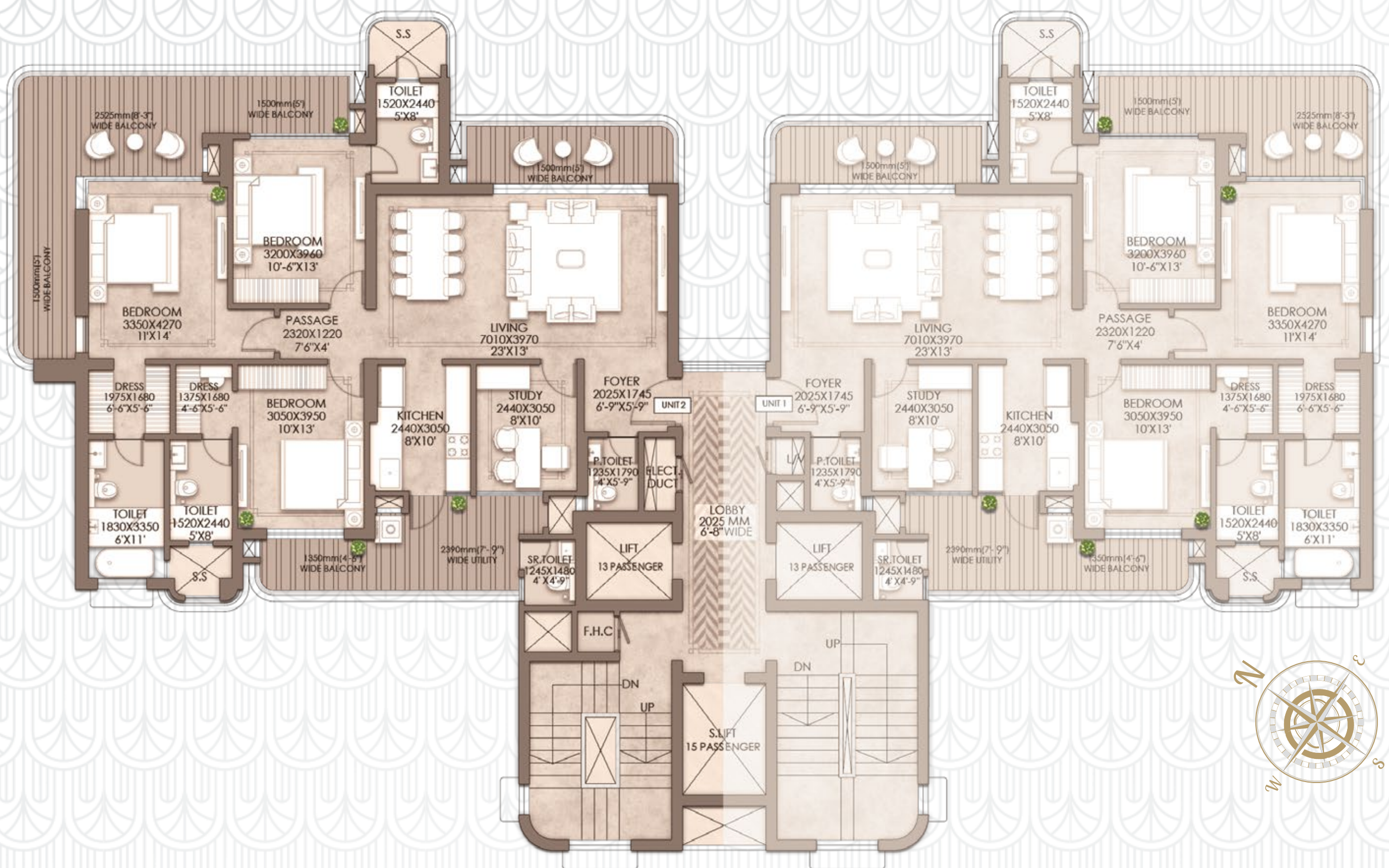
BUILT UP AREA = 166.29 sq.m | 1790 sq.ft

**Disclaimer :** The layouts, drawings, locations, plans, designs, details, specifications, elevations, features, amenities, facilities, services, products, equipment type, brands, images and other details depicted herein are only indicative and representative images, and Promoter reserves the right to change any or all of these in the interest of the development of the project as per applicable rules and regulations of the concerned jurisdictional competent Authority. It does not constitute an offer and/or contract of any type between the Promoter and the recipients/viewers. Any prospective sale shall be governed by the terms and conditions of the agreement for sale to be entered into between the concerned parties. Recipients/viewers are advised to exercise their wisdom in relying on the information provided and are requested to verify all information, specifications, area, amenities, services, payment plan and other relevant terms of allotment related document independently, have thorough understanding of the same and take reasoned decision before to concluding any decision for buying in the project.



# TOWER 4

## UNIT-2

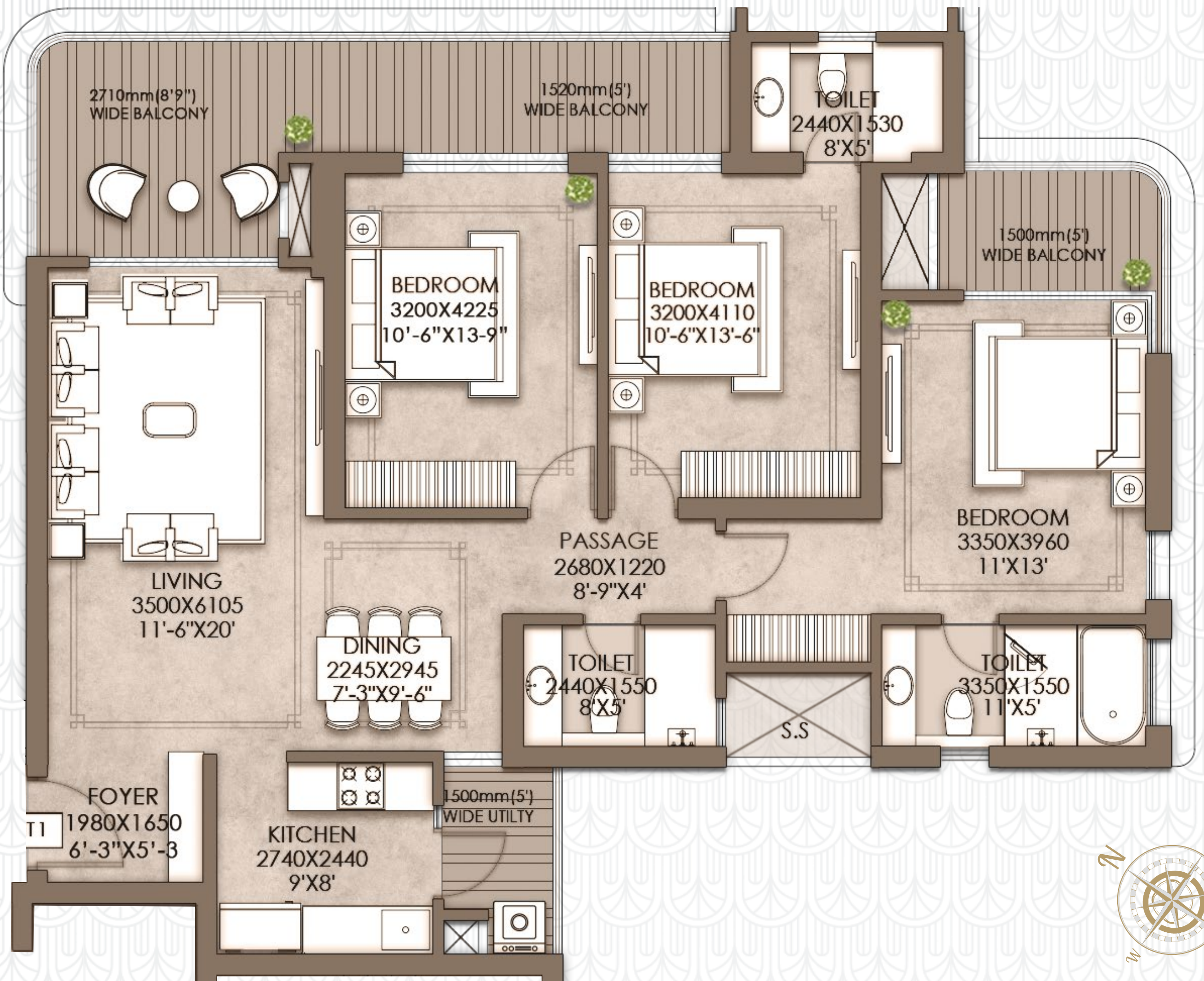
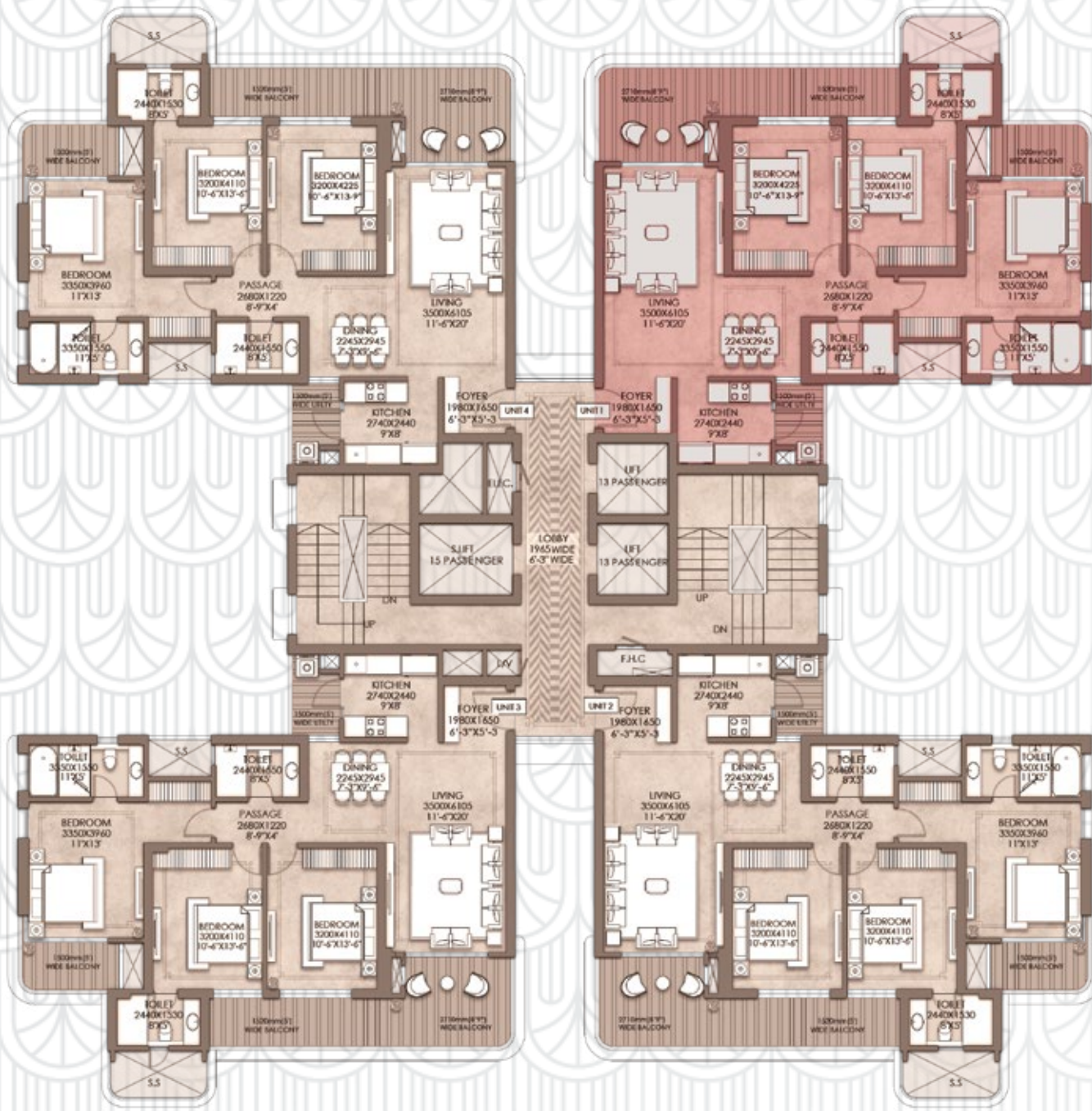


CARPET AREA = 118.91 sq.m | 1280 sq.ft

BUILT UP AREA = 176.04 sq.m | 1895 sq.ft

**Disclaimer :** The layouts, drawings, locations, plans, designs, details, specifications, elevations, features, amenities, facilities, services, products, equipment type, brands, images and other details depicted herein are only indicative and representative images, and Promoter reserves the right to change any or all of these in the interest of the development of the project as per applicable rules and regulations of the concerned jurisdictional competent Authority. It does not constitute an offer and/or contract of any type between the Promoter and the recipients/viewers. Any prospective sale shall be governed by the terms and conditions of the agreement for sale to be entered into between the concerned parties. Recipients/viewers are advised to exercise their wisdom in relying on the information provided and are requested to verify all information, specifications, area, amenities, services, payment plan and other relevant terms of allotment related document independently, have thorough understanding of the same and take reasoned decision before to concluding any decision for buying in the project.

# TOWER 5



CARPET AREA = 101.54 sq.m | 1093 sq.ft  
 BUILT UP AREA = 137.49 sq.m | 1480 sq.ft

**Disclaimer :** The layouts, drawings, locations, plans, designs, details, specifications, elevations, features, amenities, facilities, services, products, equipment type, brands, images and other details depicted herein are only indicative and representative images, and Promoter reserves the right to change any or all of these in the interest of the development of the project as per applicable rules and regulations of the concerned jurisdictional competent Authority. It does not constitute an offer and/or contract of any type between the Promoter and the recipients/viewers. Any prospective sale shall be governed by the terms and conditions of the agreement for sale to be entered into between the concerned parties. Recipients/viewers are advised to exercise their wisdom in relying on the information provided and are requested to verify all information, specifications, area, amenities, services, payment plan and other relevant terms of allotment related document independently, have thorough understanding of the same and take reasoned decision before to concluding any decision for buying in the project.

# SPECIFICATIONS



## FLOORING

VITRIFIED TILES	LIVING DINING KITCHEN BEDROOMS STUDY ROOM
ANTI SKID TILES	TOILETS BALCONIES
ENGINEERED WOODEN FLOORING	MASTER BEDROOM
GRANITE OR EQUIVALENT	STAIRCASE



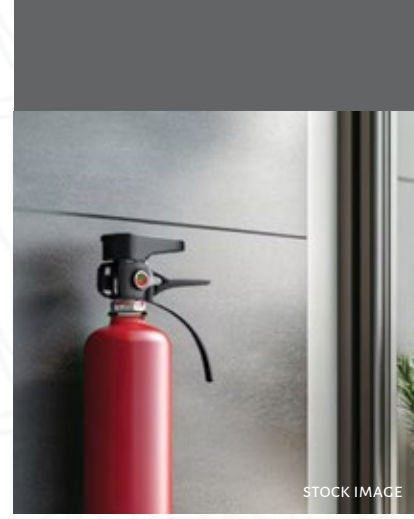
## PLUMBING

INTERNAL PIPING	AS PER STANDARD PRACTICE, IN GI / CPVC / COMPOSITE
EXTERNAL PIPING	AS PER STANDARD PRACTICE, N CI / UPVC



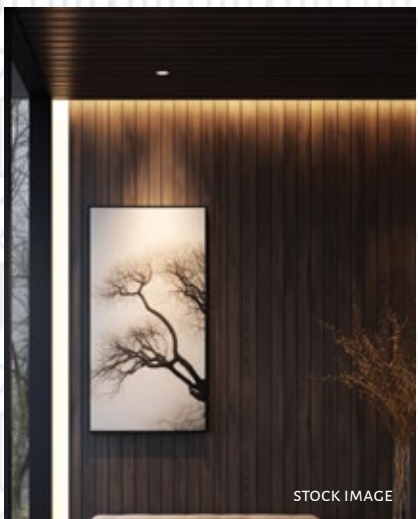
## AIR CONDITIONING

SPLIT A.C.	LIVING DINING ALL BEDROOMS STUDY ROOM
------------	--



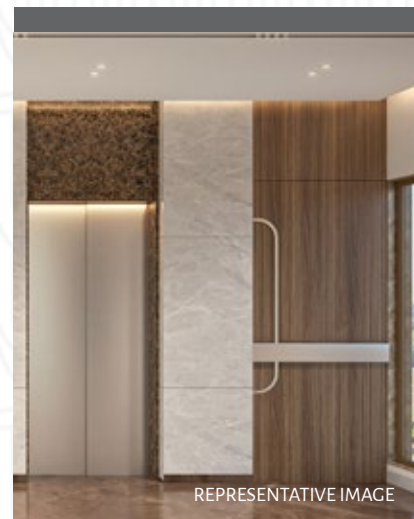
## FIRE SAFETY

FIRE SAFETY	FIRE PREVENTION, SUPPRESSION, DETECTION & ALARM SYSTEM ASPER FIRE NORMS
-------------	---



## WALL FINISH

EXTERNAL FINISH	APPROPRIATE FINISH OF HIGH QUALITY GRADE WEATHER PROOF PAINT
INTERNAL FINISH	O.B.D. / PLASTIC EMULSION OF APPROPRIATE COLOR



## ELEVATOR

2 PASSENGER LIFTS	CABIN WITH PREMIUM FINISH (REPUTED BRANDS)
1 SERVICE LIFT	STRETCHER LIFT (REPUTED BRANDS)



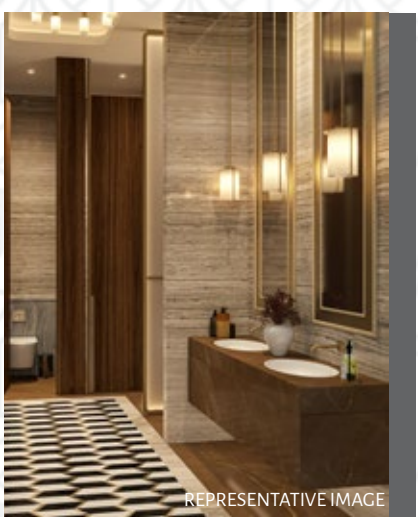
## KITCHEN

GRANITE COUNTER	COUNTER
MODULAR CABINETS	WOODWORK
CERAMIC TILES UP TO TWO FT. ABOVE WORKING COUNTER	WALL TILE
DOUBLE BOWL SINK (REPUTED BRANDS)	SINK
HOB & CHIMNEY (REPUTED BRANDS)	APPLIANCES



## ELECTRICAL

INTERNAL	FR COPPER WIRING IN CONCEALED PVC CONDUITS WITH PROTECTIVE MCB'S (REPUTED BRANDS)
SWITCHES	MODULAR SWITCHES & SOCKETS (REPUTED BRANDS)
EXTERNAL	ADEQUATE LIGHTING IN COMMON AREAS, LIFT & STAIRCASE LOBBY, PARKING SPACE, LANDSCAPE AREA, ETC.
TV POINTS	IN LIVING, DINING AND BEDROOMS
TEL. POINTS	IN DRAWING / LIVING OR DINING & TOILETS



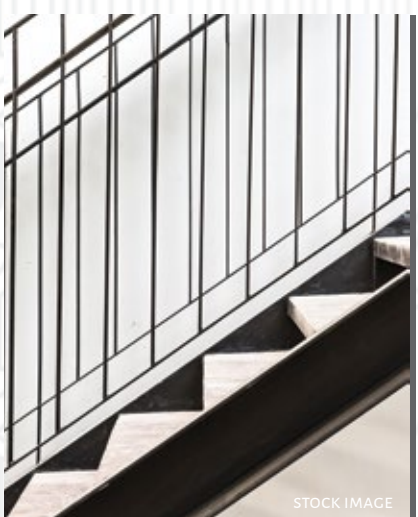
## WASHROOM

DADO	CERAMIC TILES TILL LINTEL HEIGHT
SANITARY	SANITARY FIXTURES (REPUTED BRANDS)
	CHROME PLATED FITTINGS (REPUTED BRANDS)
	GLASS SHOWER PARTITION
	BATH TUB IN MASTER BEDROOM TOILET (REPUTED BRANDS)
	HAND SHOWER WITH FIVE MODES IN MASTER BEDROOM TOILET (REPUTED BRANDS)



## POWER BACK-UP

GENERATORS	100% POWER BACKUP OF EMERGENCY LIFTS, COMMON AREAS
------------	---



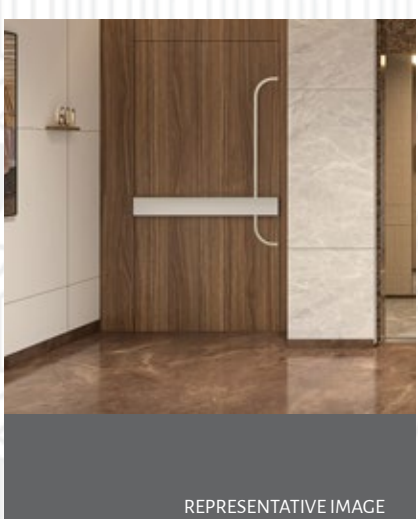
## RAILING

MILD STEEL	BALCONY STAIRCASE
------------	----------------------



## SECURITY & FTTH

VDP	PROVISION FOR VIDEO DOORPHONE IN ENTRANCE DOOR OF FLAT
FIBRE-OPTIC COMM. NETWORK	PROVISION FOR OPTICAL FIBER
SECURITY	PERIMETER AND ENTRANCE LOBBY WITH CCTV CAMERAS



## DOORS & WINDOWS

INTERNAL	4 FT. WIDE & 8 FT. HIGH; DESIGNER POLISHED ENTRANCE DOOR FIXED IN HARD WOOD FRAME VENEER/ MEMBRANE FINISH WITH TOWER BOLTS & DIGITAL LOCK (REPUTED BRANDS)
	8 FT. HIGH; LAMINATED FLUSH DOOR FIXED IN ENAMEL PAINTED HARD WOOD FRAME
EXTERNAL	ALUMINIUM SLIDING DOORS & WINDOWS WITH PROVISION FOR ONE WIRE MESH SHUTTER



## STRUCTURE

STRUCTURE	EARTHQUAKE RESISTANT R.C.C. FRAMED STRUCTURE WITH APPLICABLE SEISMIC CODES
-----------	--

# OUR TEAM OF EXPERTS

**Architect  
Hafeez  
Contractor**

PRINCIPAL ARCHITECT



INTEGRAL DESIGNS  
INTERNATIONAL STUDIO PVT. LTD

LANDSCAPE ARCHITECT



ENGINEERING AND PLANNING  
CONSULTANTS

TRAFFIC AND PARKING



Vakil Mehta Sheth  
CONSULTING ENGINEERS

STRUCTURE CONSULTANT



MEP/HVAC CONSULTANT



# DELIVERED PROJECTS



HARIDWAR



REPRESENTATIVE IMAGE



SUBLIMIS  
your home, your story

SECTOR - 1, GREATER NOIDA WEST



REPRESENTATIVE IMAGE

# ONGOING PROJECTS

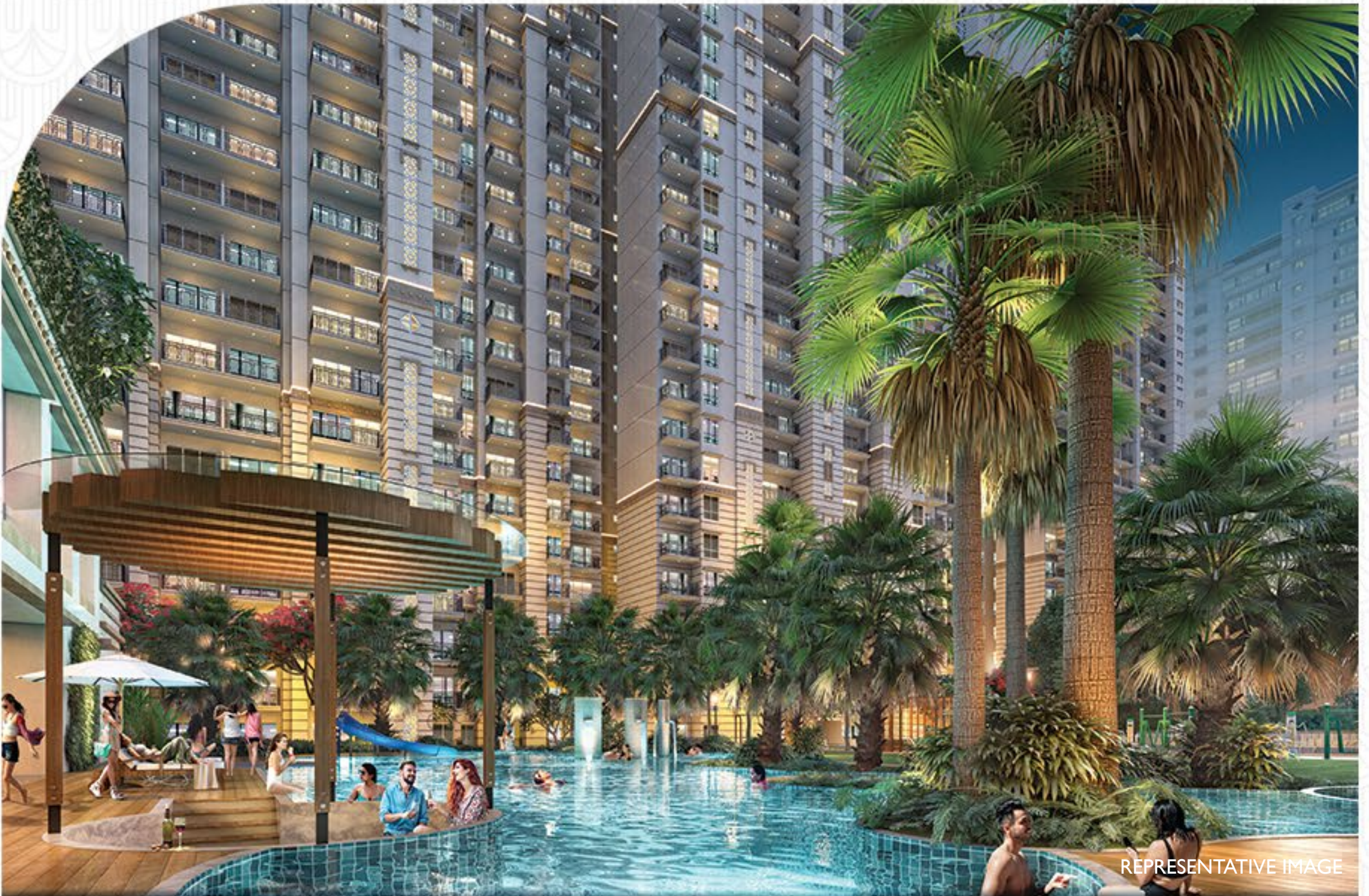
## THE FLAGSHIP

BUSINESS & BEYOND

SECTOR 140A, NOIDA



TECHZONE-4, GREATER NOIDA WEST





RERA : UPRERAPRJ724518/07/2024  
www.up-rera.in



**Head Office:** Ground Floor, Tower A, Logix Techno Park, Sector 127, Noida - 201301

**MAESTA**  
YOUR HOME, YOUR GRANDEUR

**Site Address:** Plot No. GH/II B, Sector I, Greater Noida West, Gautam Buddh Nagar, UP - 201306

[www.crcgroup.in](http://www.crcgroup.in)  
click here to know more

**Disclaimer:** By using or accessing the brochure, you agree with the disclaimer without any qualification or limitation, the amenities, specifications, surrounding infrastructure, stock images/images and features shown and/or mentioned and the picturesque renders used herein are purely indicative and for representation purposes only and it may differ from the actuals. Not all images may have been shot at site. All images, interiors, and furniture items exhibited therein are to give a perspective to the customer and are not a part of the space to be sold to the clients/customers. This is only an invitation of offer and does not constitute an offer. The objective of this brochure is, to indicate to the customers/ clients the extent of the amenities and facilities that may come up in the project as per the present approved layout/plan, and any subsequent revised plan, if any, the particulars of title documents and sanction plan will be made available on visit. In no event, the Promoter, its group companies, affiliates, directors and its entities shall be liable for any loss and/or damages arising from the data/information provided in the brochure. The use of any information or material on the brochure is entirely at the reader's own risk.

