



A world where life sings
with joy



PRATEEK
Canary
3/4 BHK Residences & Duplex Penthouses
Sector 150, Noida

Index

About Prateek Canary	01
Bird's Eye View	03
Grand Entrance	04
Balcony View	06
Wall Sized Windows	07
Private Party Deck	08
Duplex Penthouses	09
Double Decker Clubhouse	10
Half Football Field	13
Gymnasium	14
Billiards Room and Mini Theatre	15
Lawn Tennis and Sauna and Spa	16
Cricket Pitch and Skating Rink	17
Jogging Track Cycling Track	18
Half Basket Ball Court and Indoor Badminton	19



GO DIRECTLY TO ANY PAGE
BY CLICKING ON NUMBER

Index

Green Landscapes	20
Forest Retreat	22
Open Lawn Zone	24
Location Advantages	27
Prime Location	28
Metro and Airport Connectivity	29
Legend	30
Project Master Plan	32
Unit & Cluster Plans	33
Specifications	48
Location Map	53
Delivered Projects	54
Contact Us	55



GO DIRECTLY TO ANY PAGE
BY CLICKING ON NUMBER



about

Prateek 

Canary



RENDERPAD

Click to
Experience
Prateek Canary



Prime Location

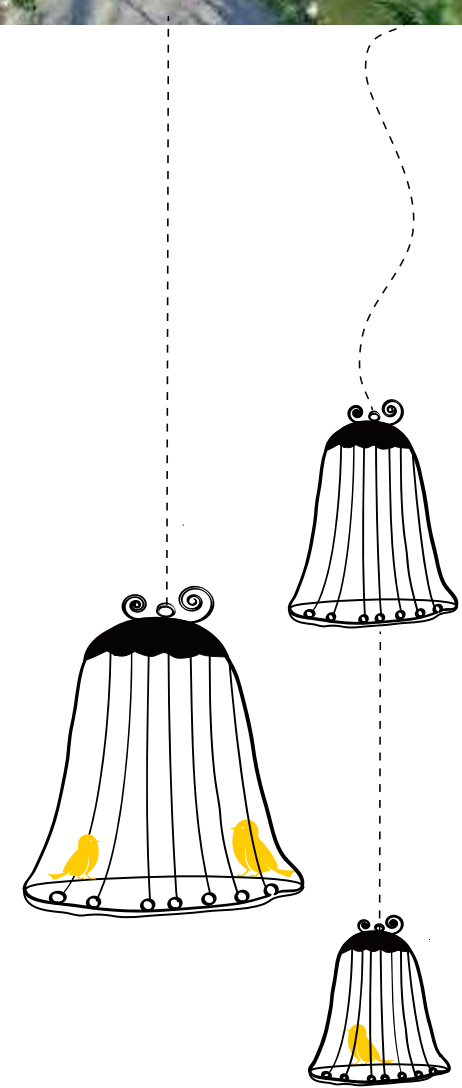
Virtual Walkthrough

Highlights Video



Uncage your life

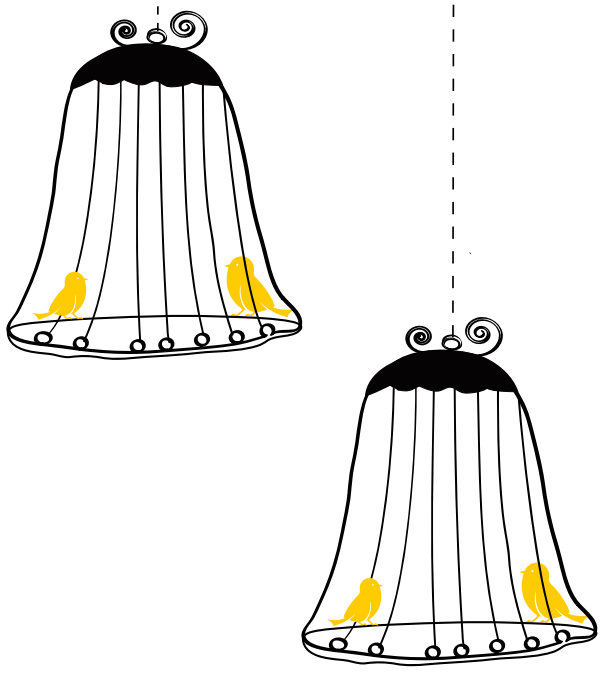
- Spacious 3/4 BHK residences and duplex penthouses
- Panoramic golf views
- Sprawling private deck
- Only 664 units in 12.50 lush green acres





Uncage the opulence

Grand entrance at Prateek Canary





- Elegant tree-lined avenue
- Stand out sculpture island
- Elegant double height entrance lobby
- 5-star like drop-off





Uncage your horizons

- Endless golf views

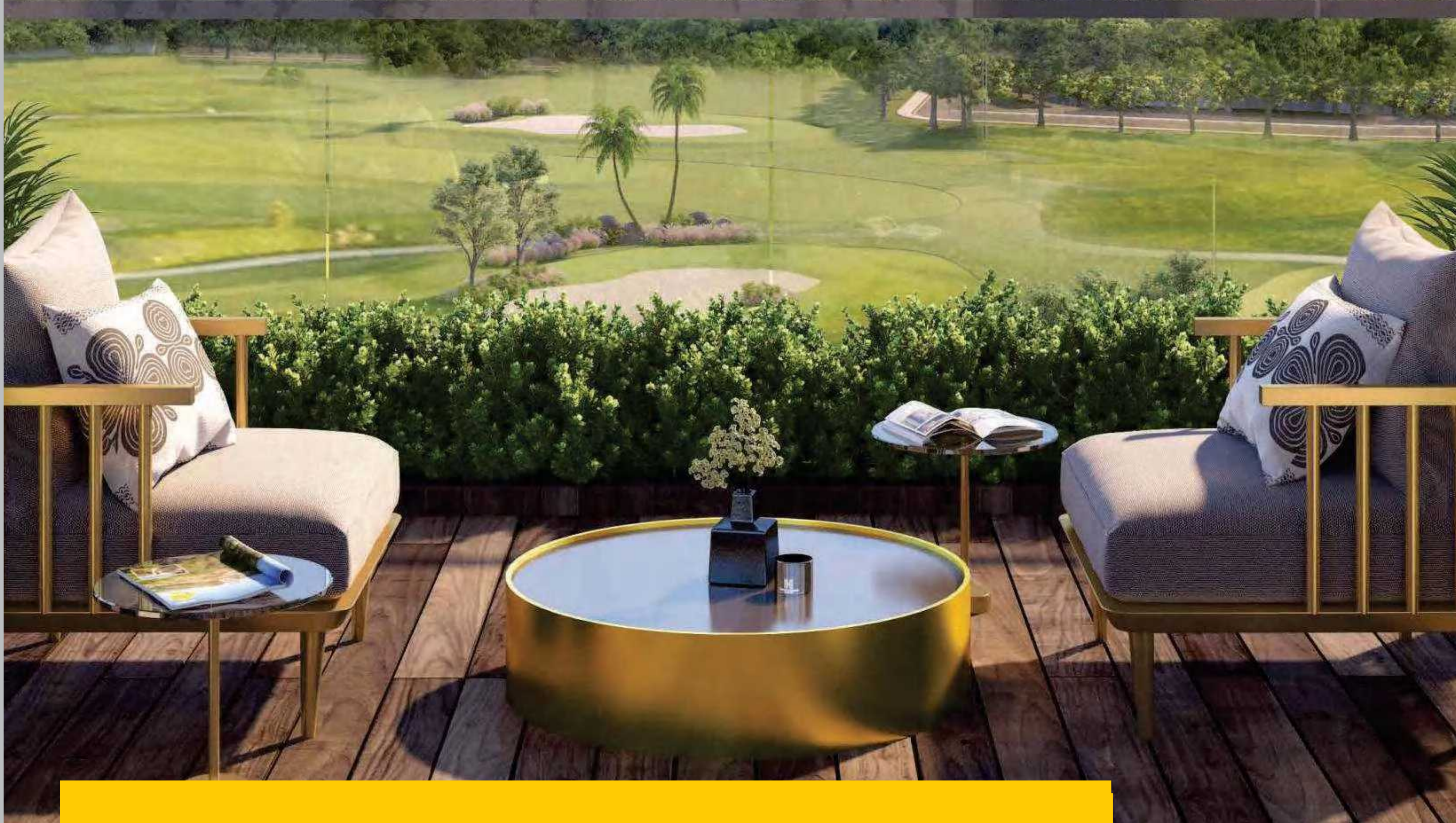




Uncage your vision

- Wall sized windows open up expansive new vistas





Uncage your free spirit

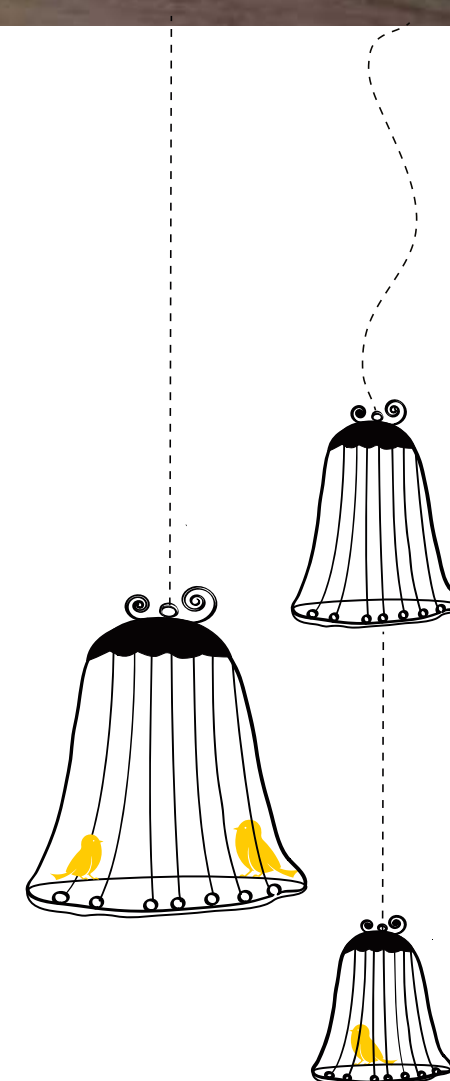
- Lavish private party deck





Uncage your senses

- Luxurious duplex penthouses





double
decker
clubhouse 



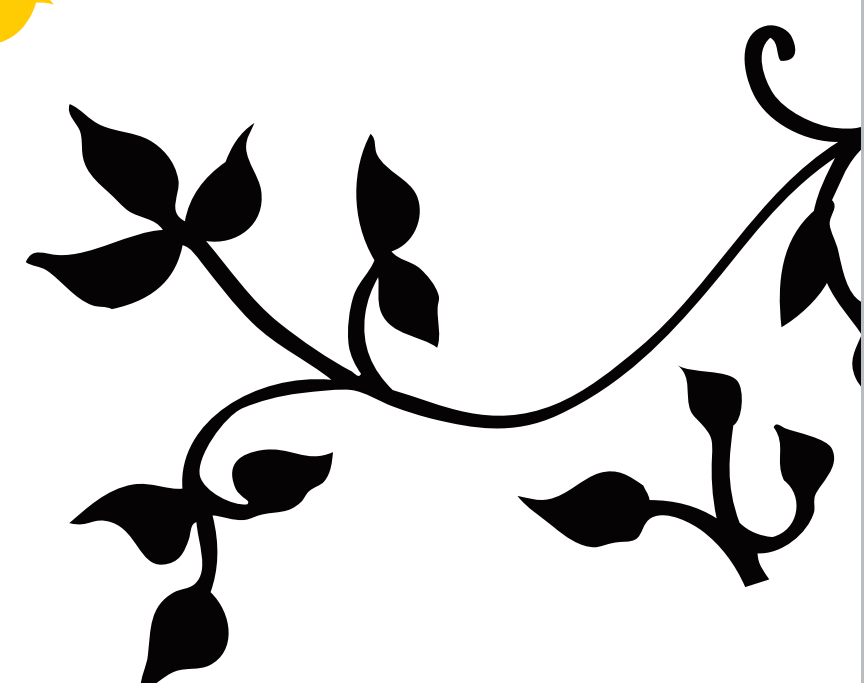
Uncage your social life

- Double decker clubhouse loaded with lively moments
- Huge glass walls
 - Swimming pool with separate kids' pool
 - Banquet hall





- Night view of the clubhouse

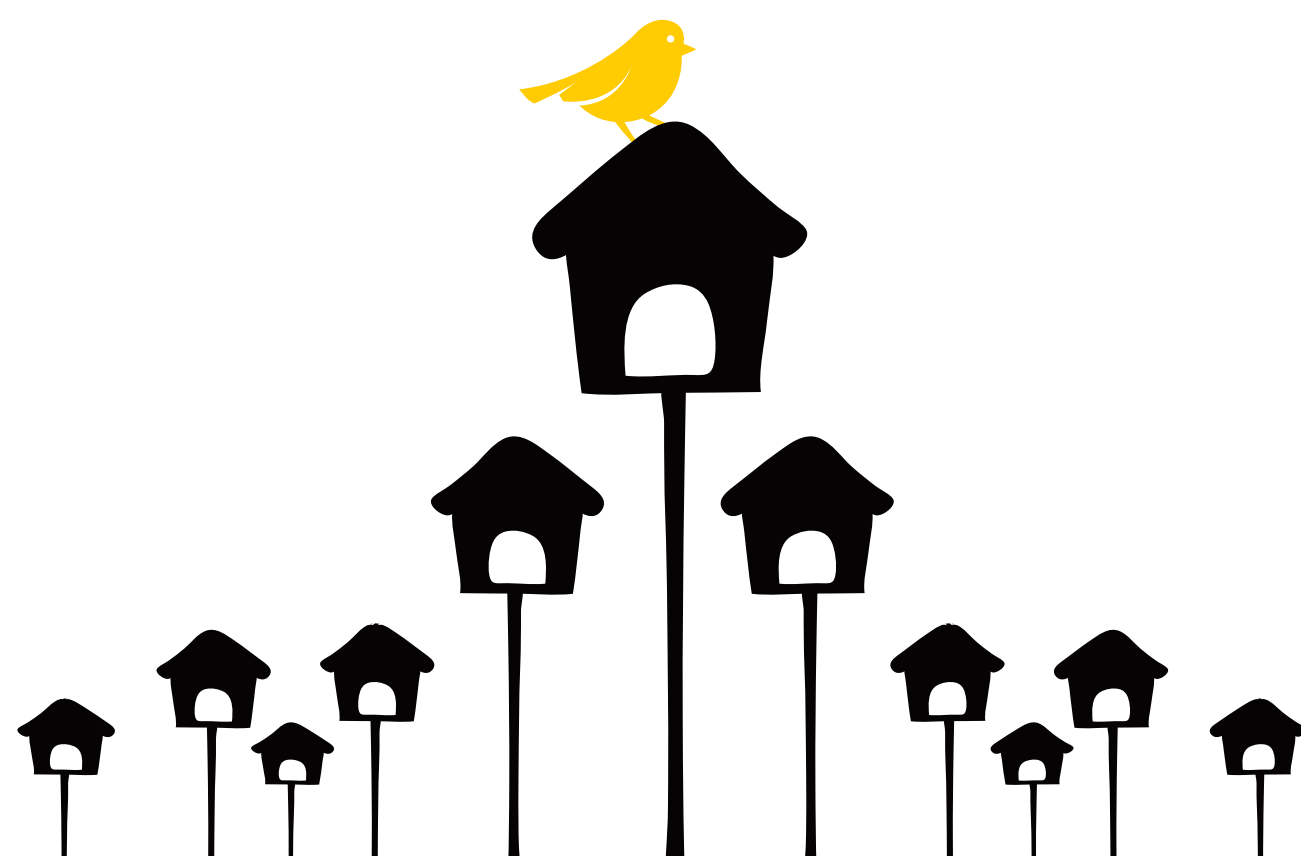




Uncage your inner champion

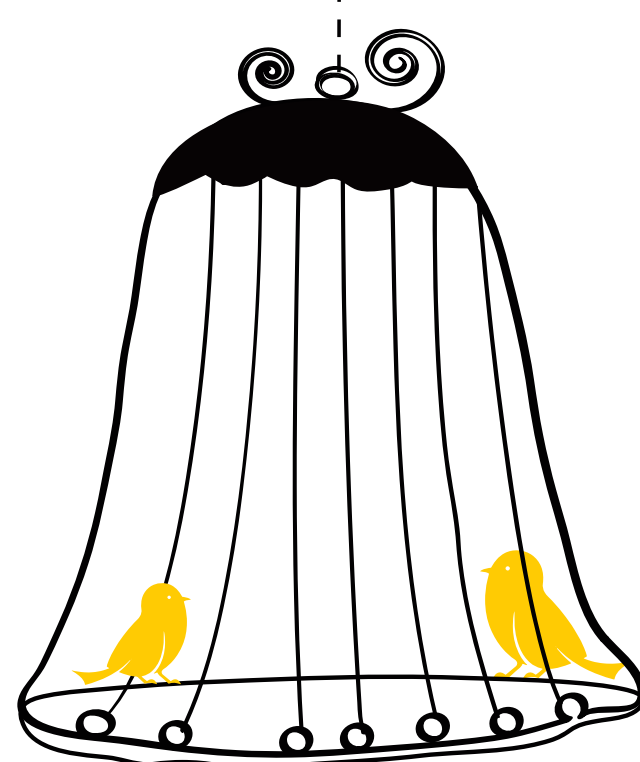
World class sports zone in your own backyard

- Half football field/Multi-purpose sports field



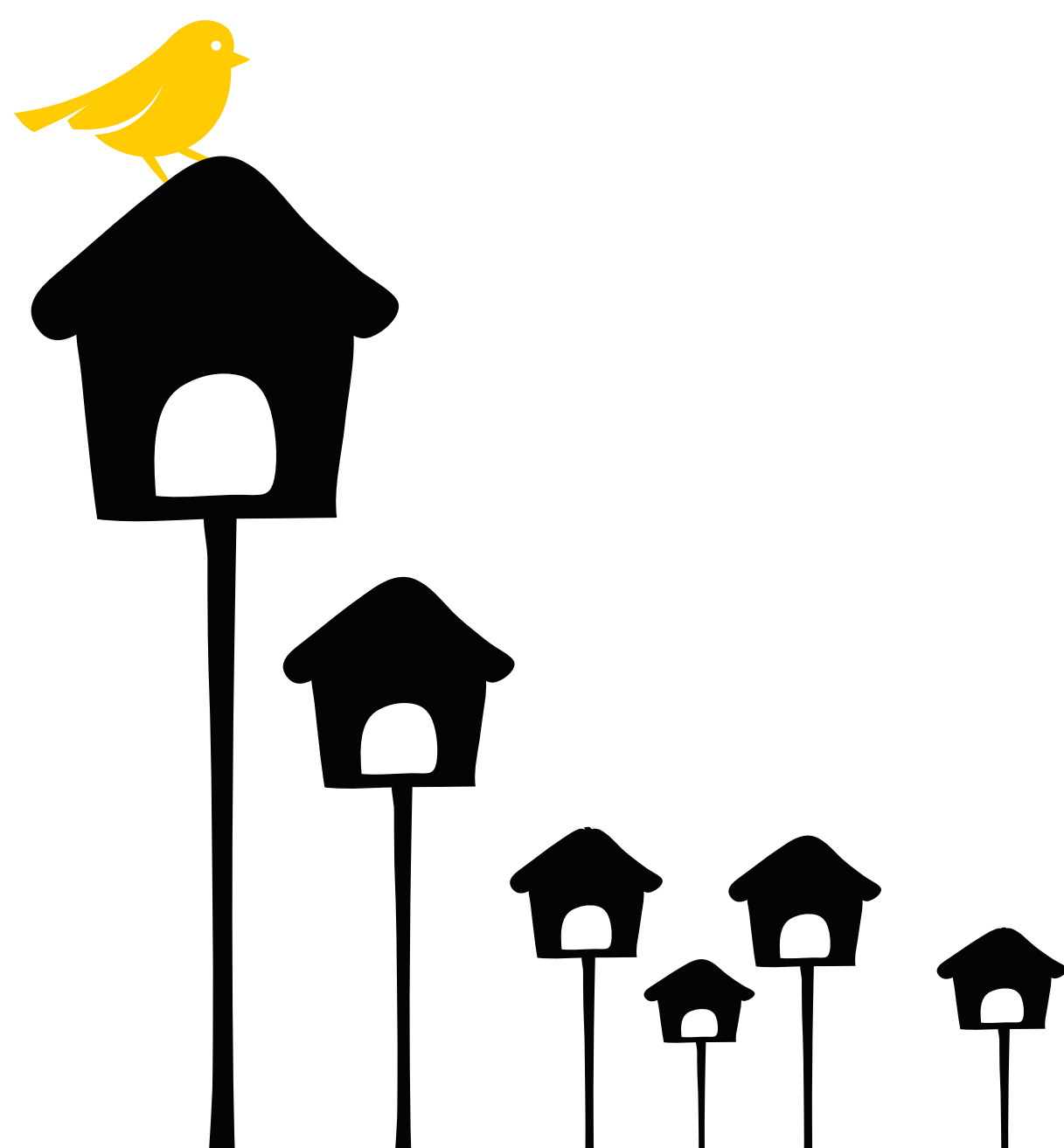


- State-of-the-art gymnasium



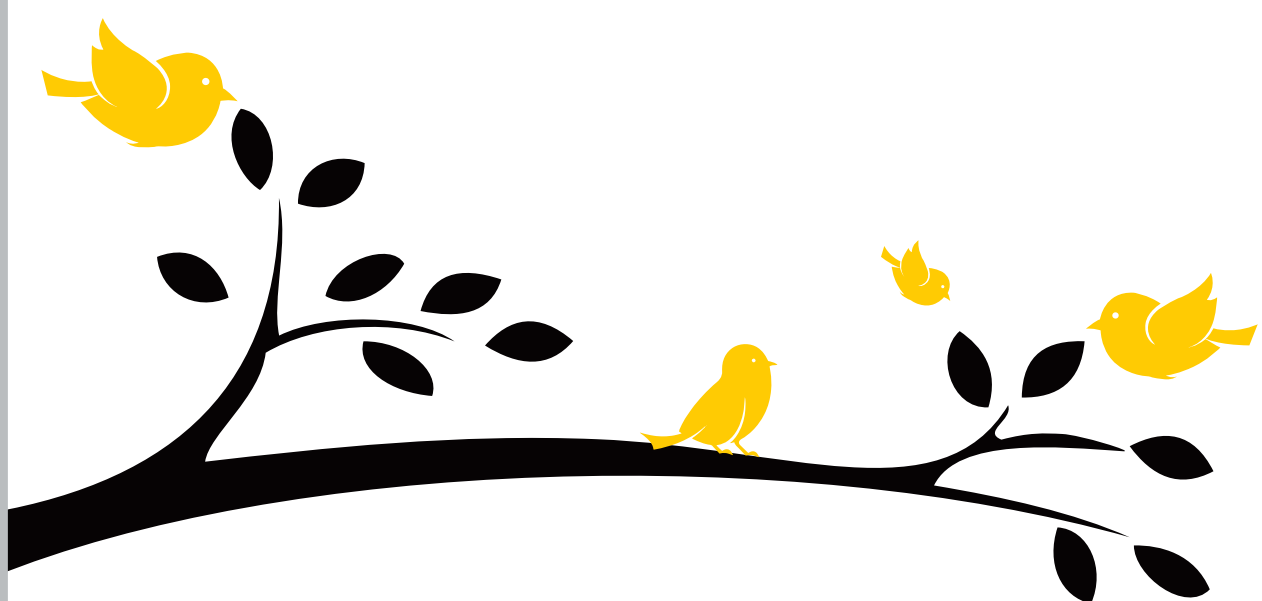


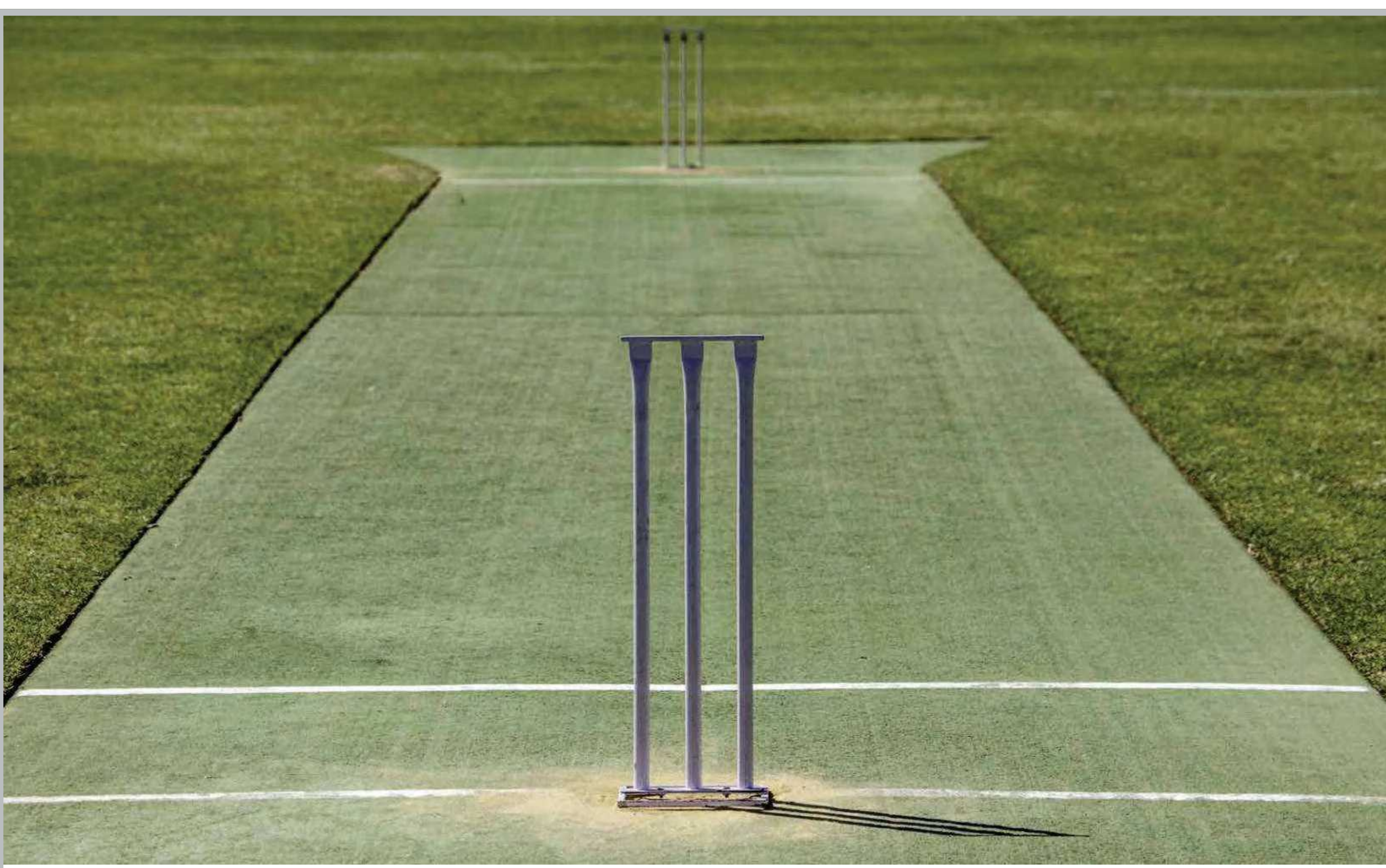
- Action packed billiards room
- Intimate screening theatre



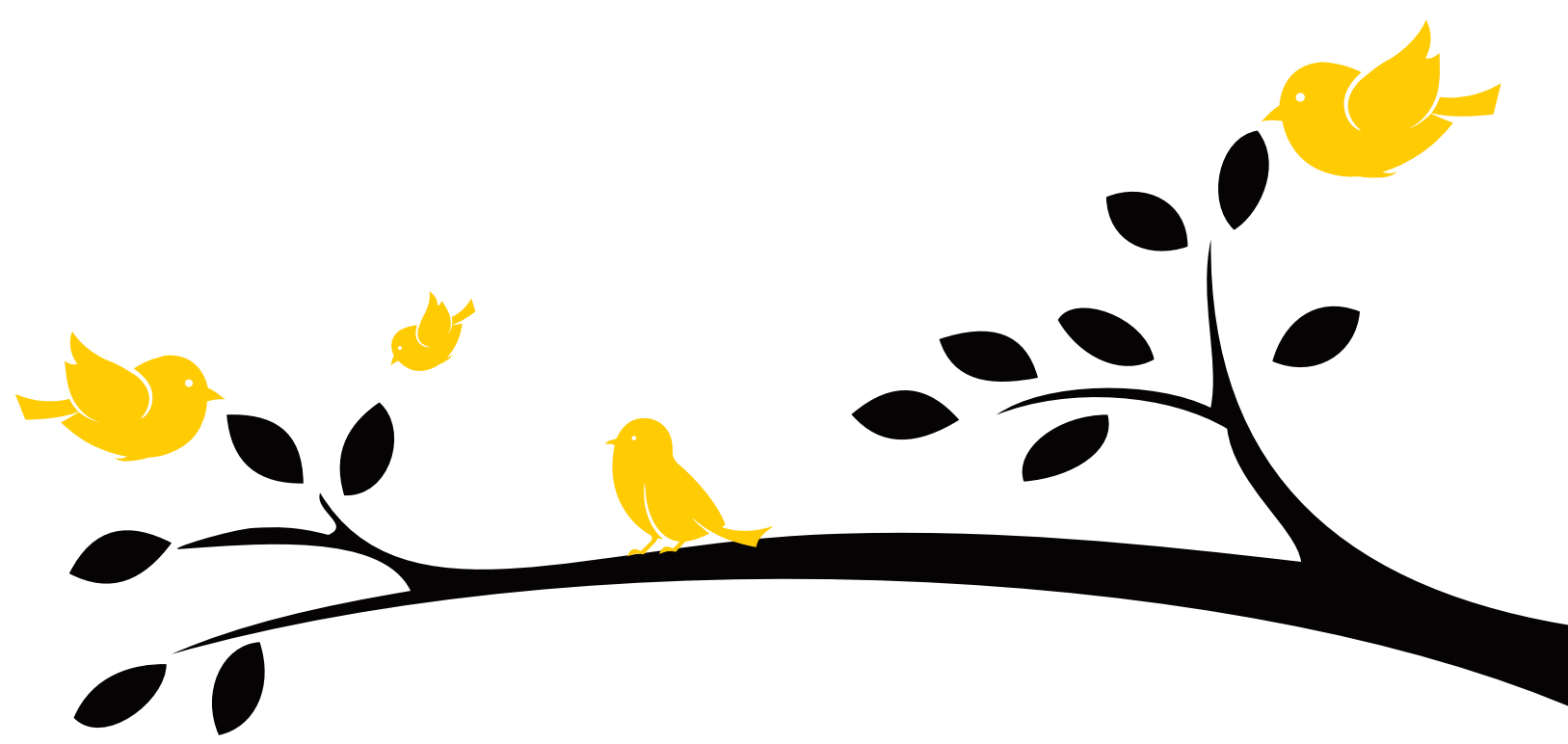


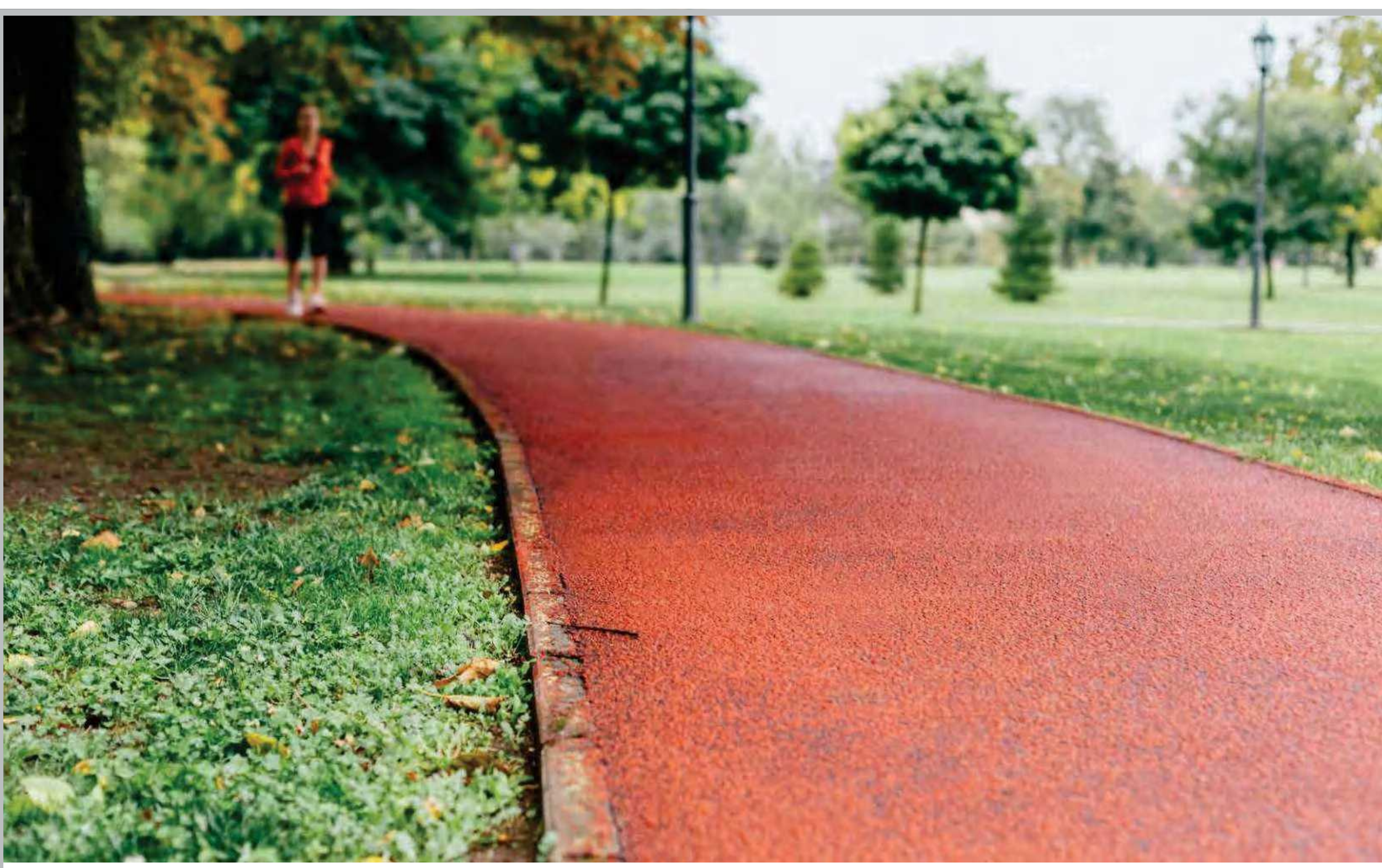
- Tennis court
- Sauna and Spa to unwind and recharge
- Indoor squash



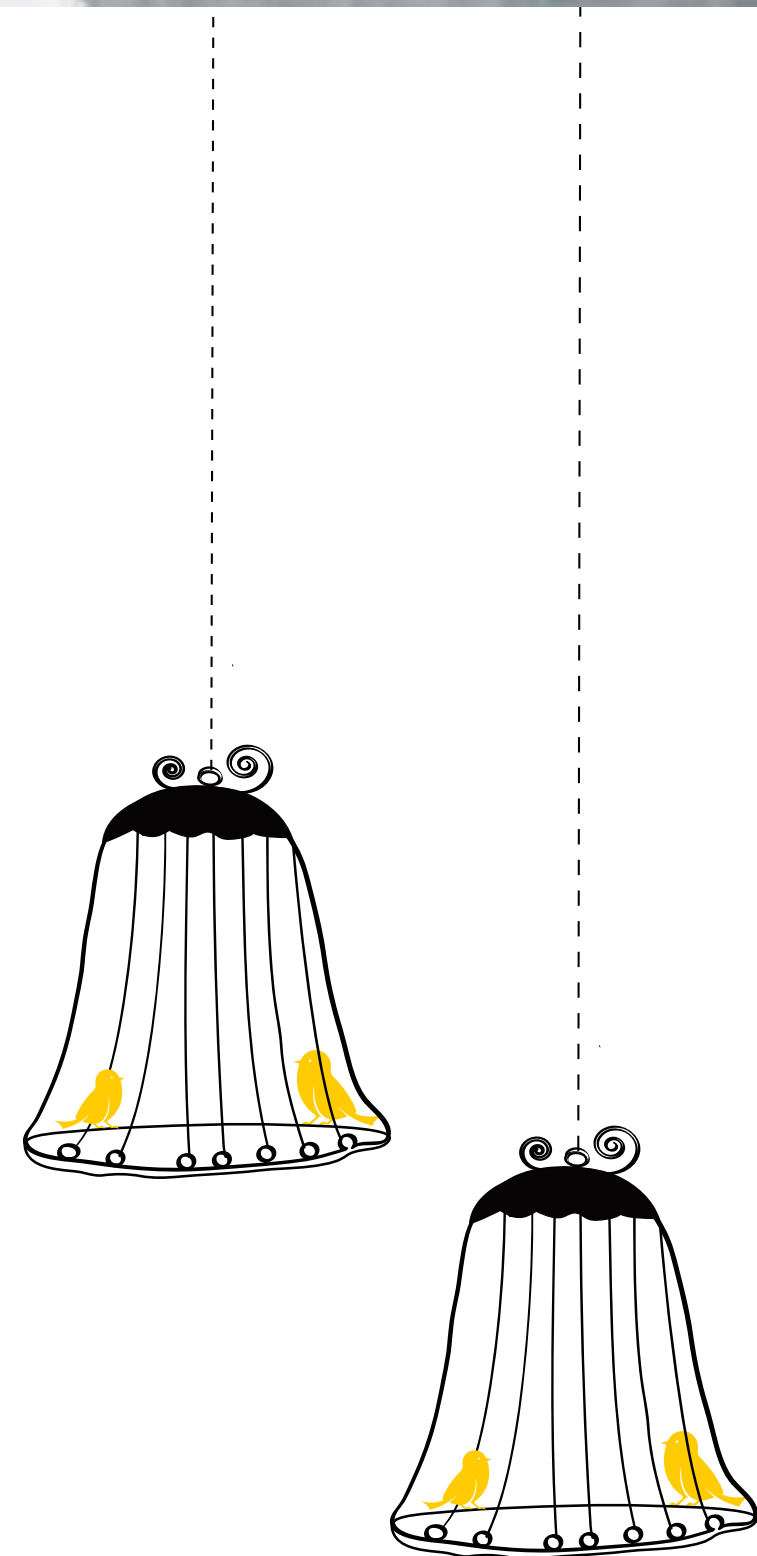


- Practice cricket pitch
- Skating rink
- Volleyball





- Jogging track
- Cycling track





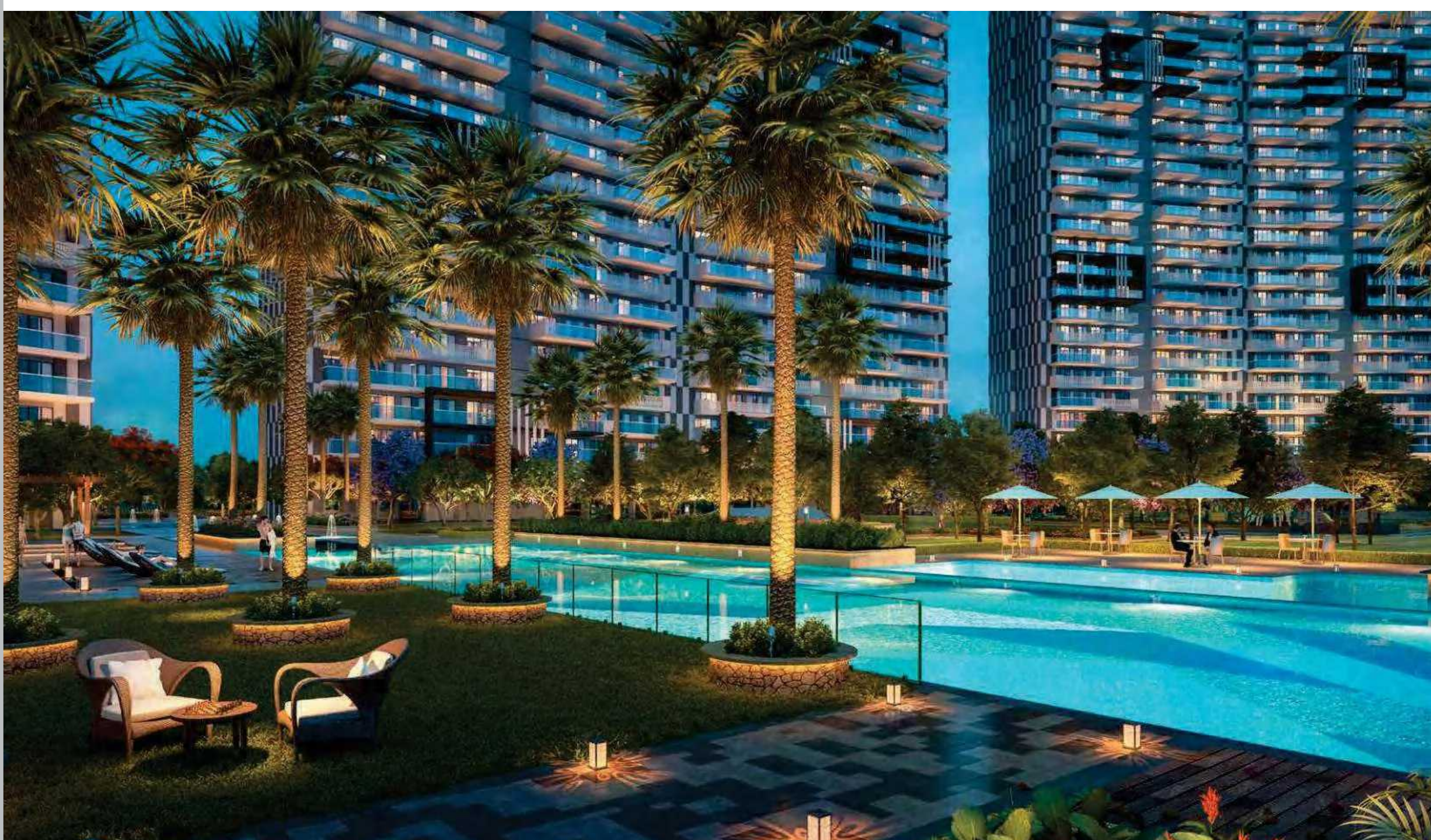
- Half basketball court
- Indoor badminton court
- Table tennis





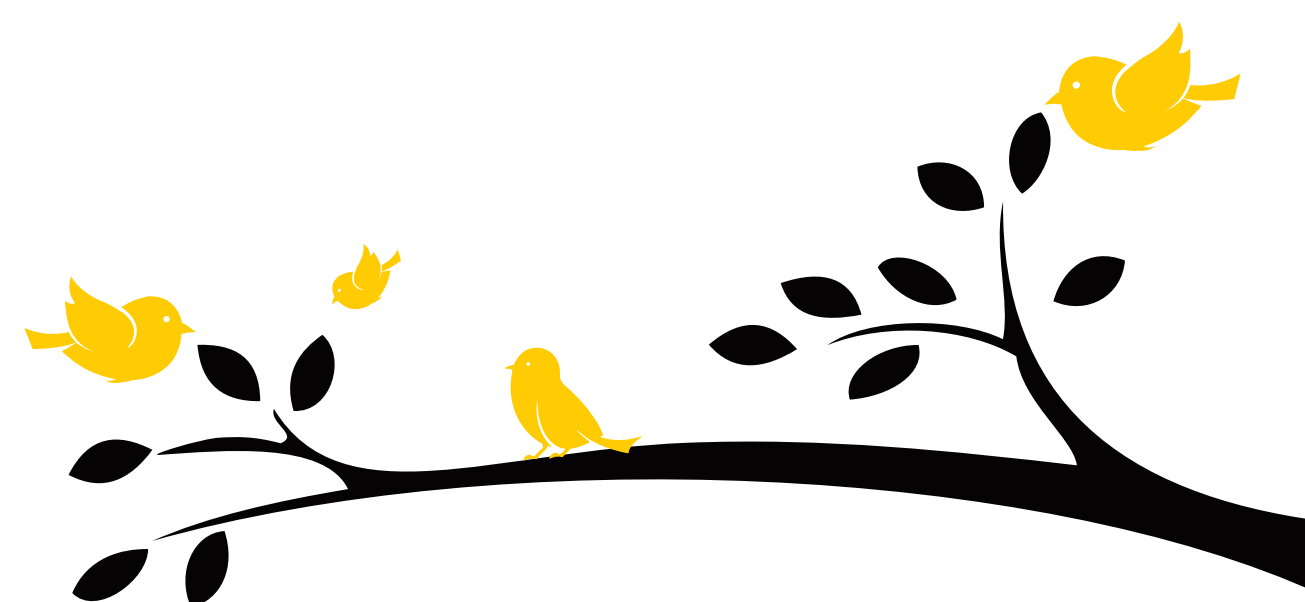
green
landscapes





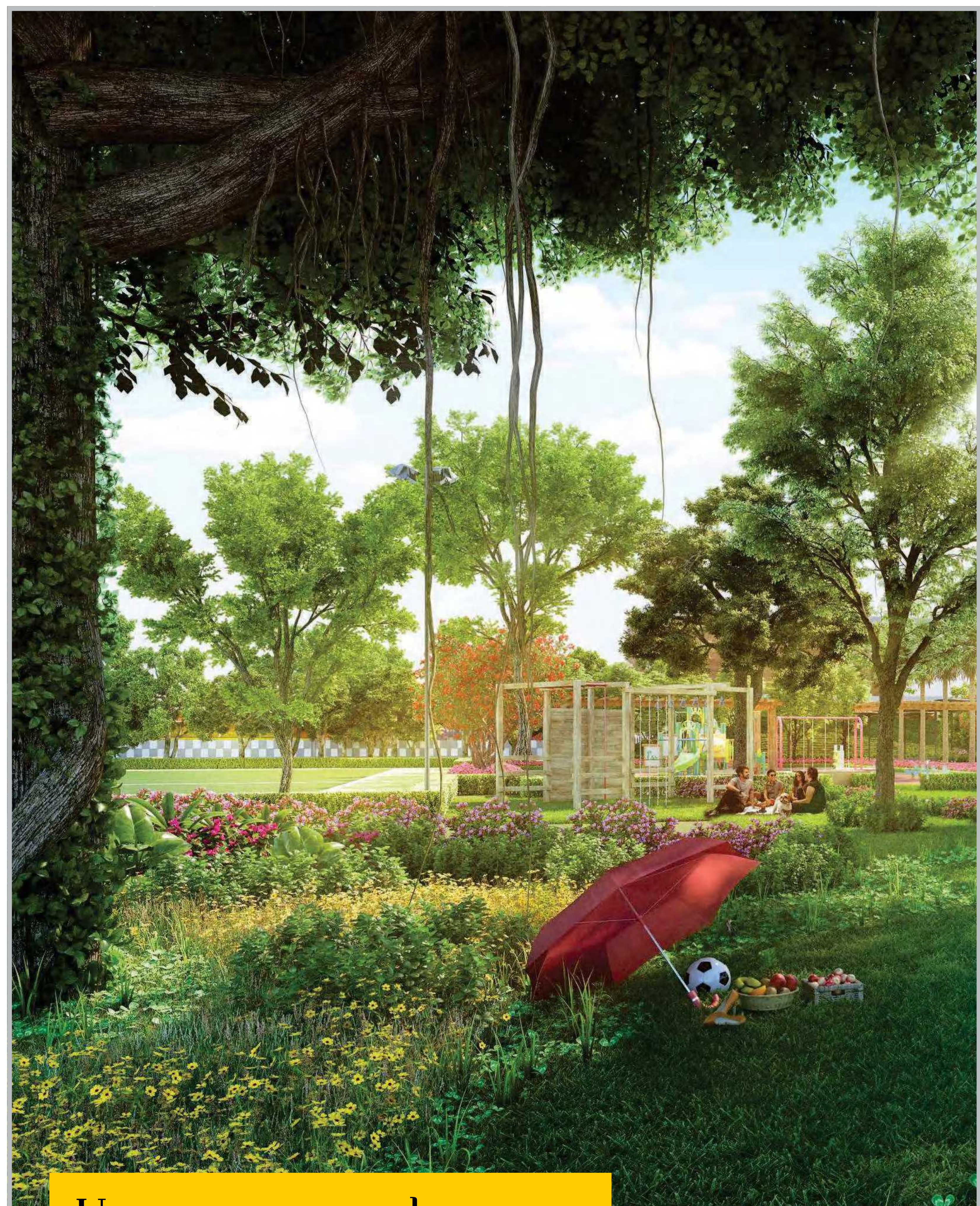
Uncage your breath

- Lush green, rejuvenating landscapes
- The palm court





forest
retreat



Uncage your soul

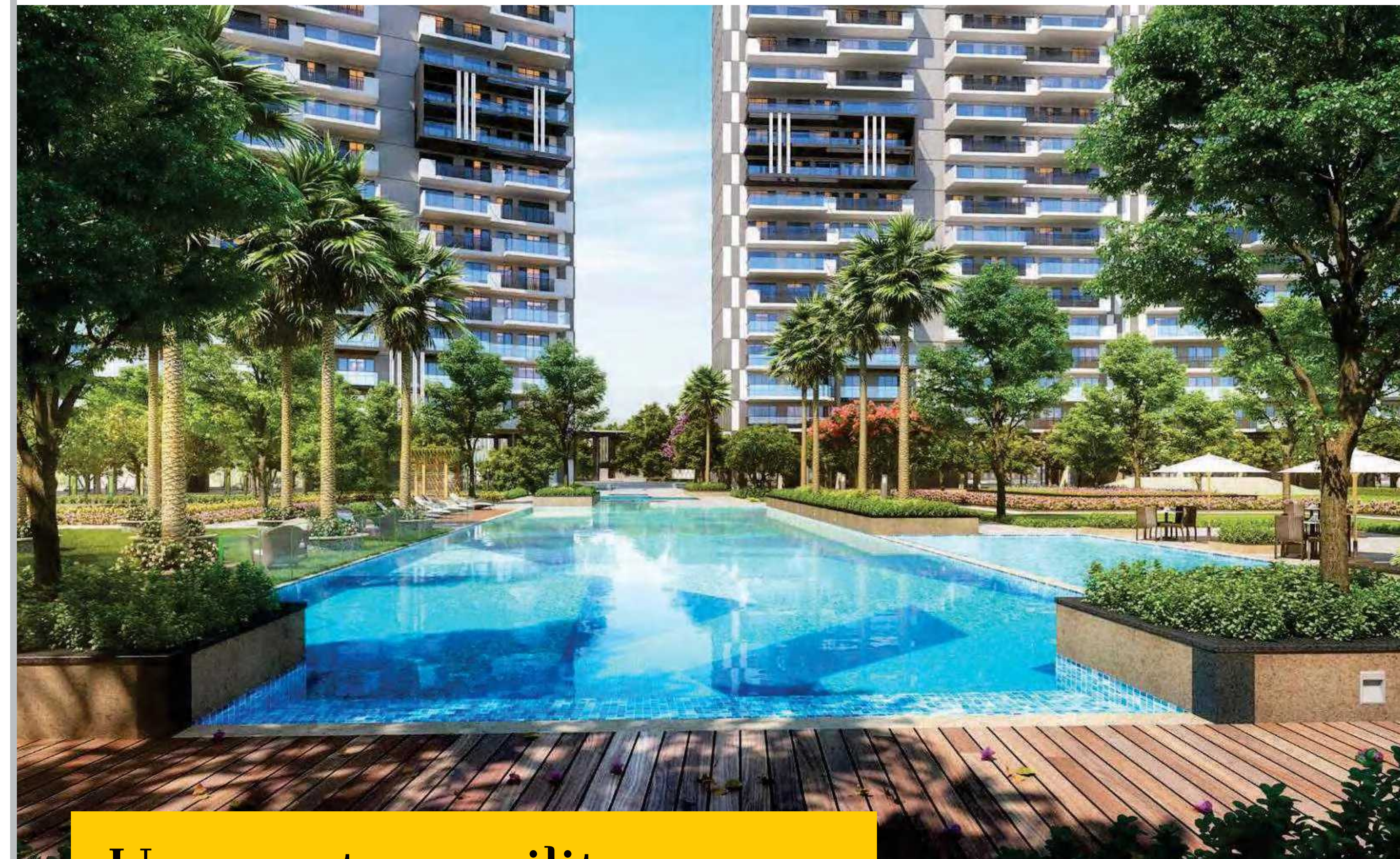
Commune with your self at the Forest Retreat

- Nature exploration
- Wellness garden
- Forest trail



open
lawn
zone



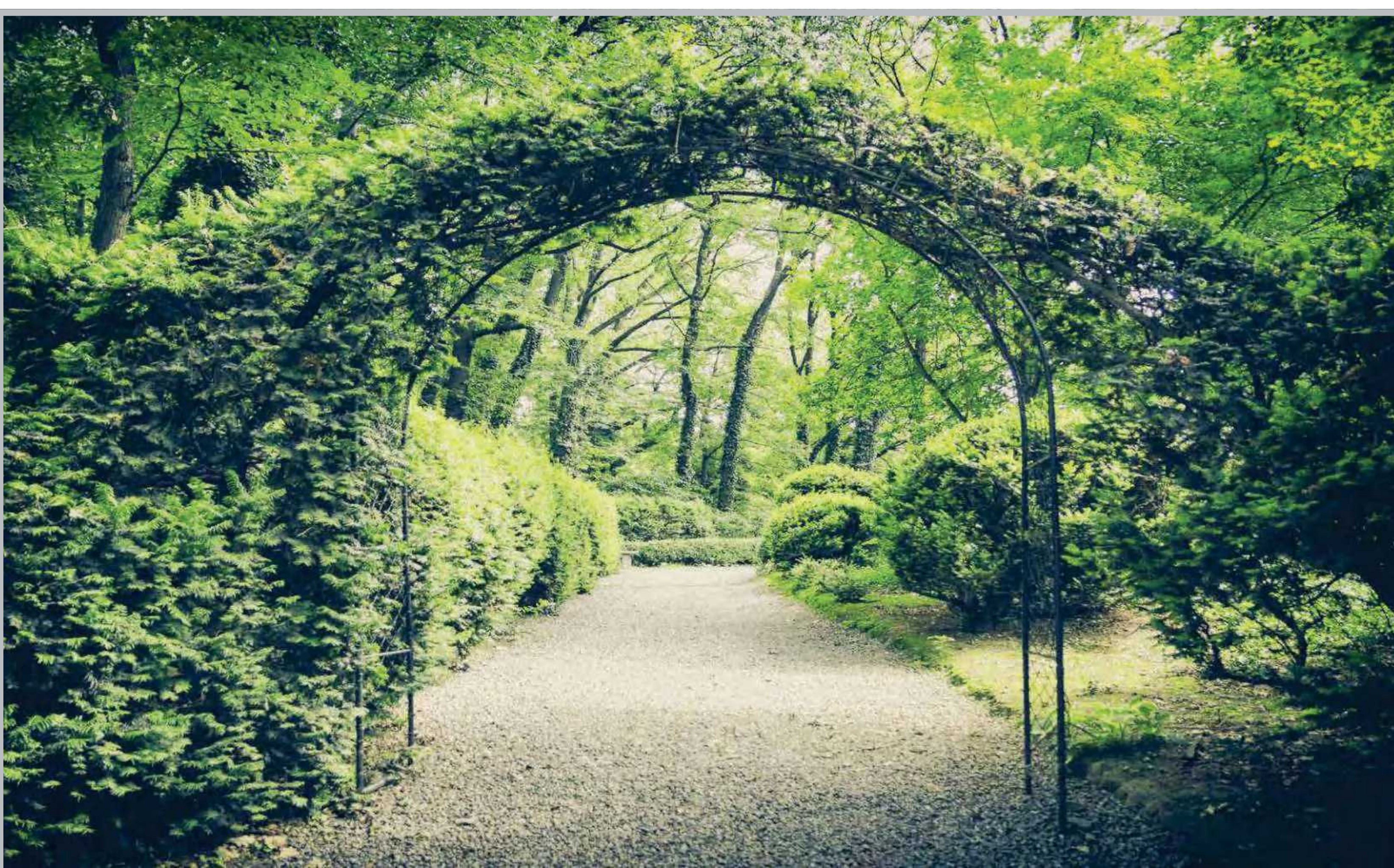


Uncage tranquility

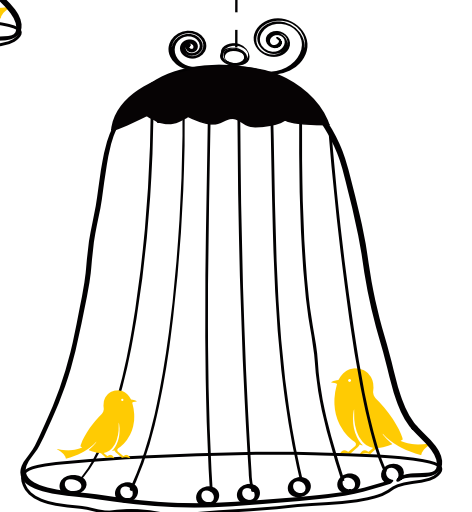
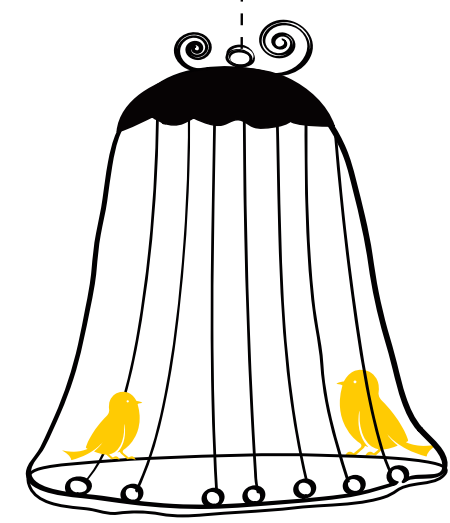
A community masterfully planned to elevate your senses

- Sit-out court
- Sculptures
- Grand event lawn





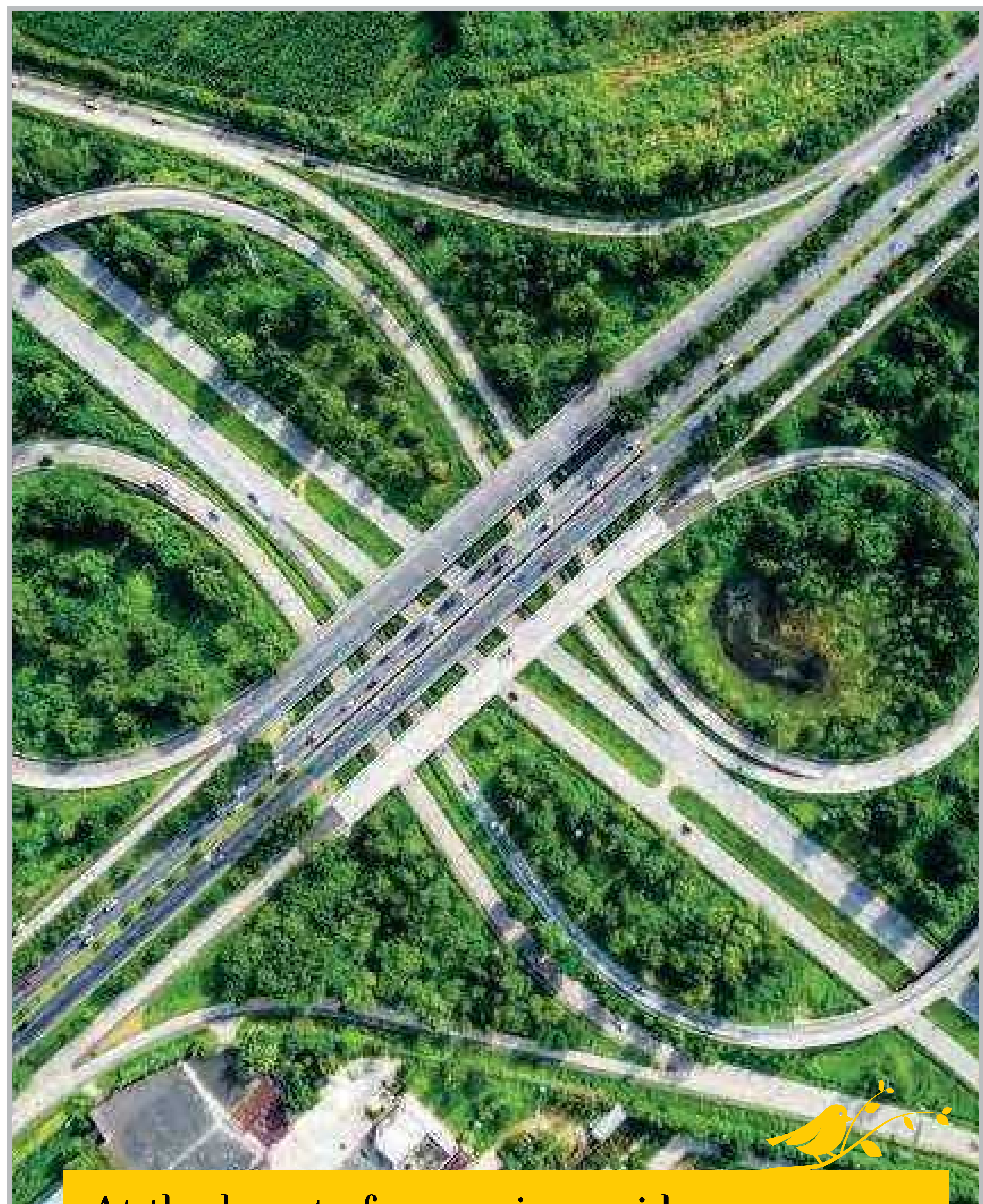
- Kids' play area
- Thematic garden
- Senior citizen court





location avantageés





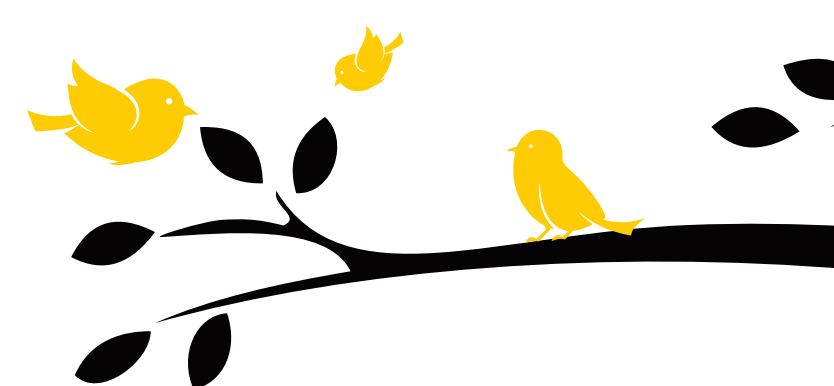
At the heart of emerging noida

- The most attractive location in Noida's most coveted Sector 150
- Connected by three arteries:

Yamuna Expressway

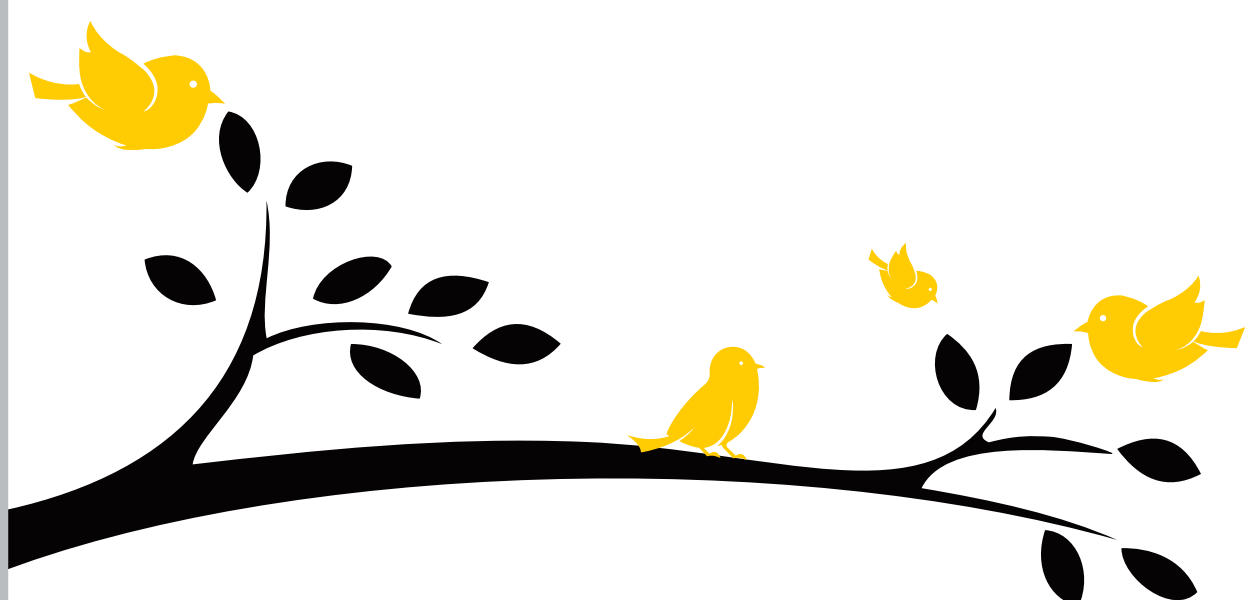
Noida-Greater Noida Expressway

Faridabad-Noida-Ghaziabad Expressway





- 15 minutes from upcoming Jewar Airport
- A short walk from the Sec-148 metro station





legends
and master
plan



Legend

Prateek Canary Entrance

01. Grand Entrance
02. Green Project Branding Wall
03. Entrance Water Feature
04. Thematic Island
05. Building Drop Offs
06. Building Identity/Sculpture

Centre Avenue

07. Central Avenue
08. Water Feature

Club House and Amenities Zone

09. Adult's Pool
10. Kids' Pool
11. Palm Court
12. Gazebo
13. Pool Deck
14. Pool Side Cafe
15. Party Lawn
16. Lawn
17. Outdoor Reading Area

Open Lawn Zone

18. Grand Event Lawn
19. Stepped Planting
20. Kids Play Area
21. Senior Citizen Sitout
22. Ampitheater
23. Sitout Area with Structure
24. Sculpture
25. Thematic Plantation
26. Multipurpose Lawn

Sports Zone

27. Half Football Field/Multi-Purpose Sports Field
28. Half Basketball Court
29. Volley Ball Court
30. Net Cricket Practice Pitch
31. Outdoor Table Tennis with Shade Structure
32. Skating Rink
33. Jogging Track
34. Tennis Court
35. Badminton Court

Forest Retreat

36. Nature Kids Play Area
37. Camping/Picnic Area
38. Nature Exploration
39. Forest Trail
40. Outdoor Stepped Seating
41. Wellness Garden
42. Yoga/Meditation Lawn
43. Leisure Lawn
44. Pets Park
45. Dense Plantation

Commercial Zone

46. Commercial Plaza
47. Clubhouse Entry

Stilt Landscape

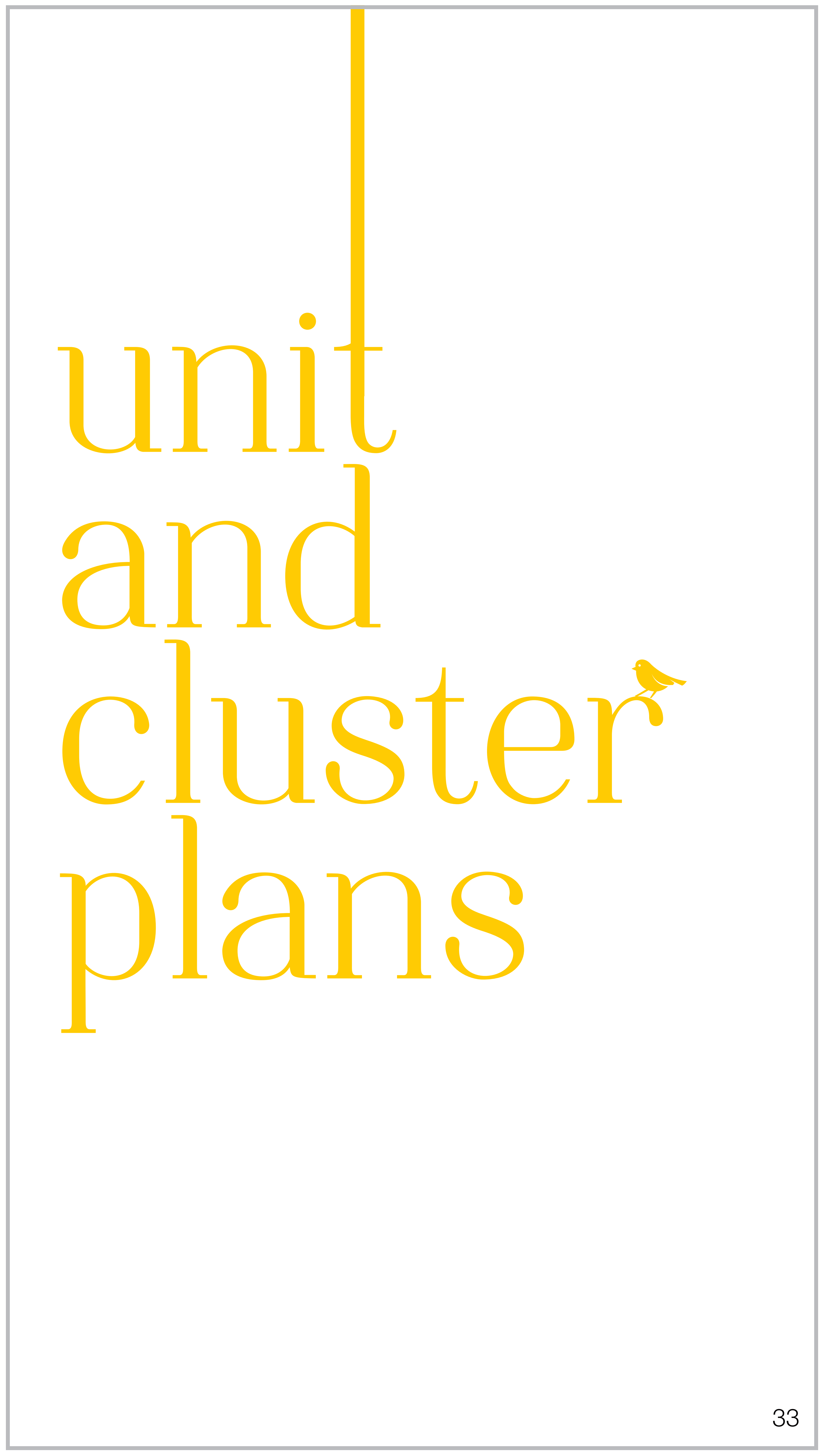
48. Dry Garden
49. Pathway
50. Lawn
51. Sitout Court

Apartment Layout	Carpet Area (Sq.Ft.)	Balcony (Sq.Ft.)	Built Up Area (Sq.Ft.)	Total Area (Sq.Ft.)
3BHK ELITE (1700)	1138.84	240.84	1379.68	1700
3BHK DELUXE (2040)	1346.20	290.00	1636.20	2040
3BHK LUXURY (2555)	1618.88	438.71	2057.59	2555
4BHK LUXURY (3355)	2067.35	566.05	2633.40	3355
DUPLEX PENTHOUSE (6100)	3751.64	1130.85	4882.49	6100

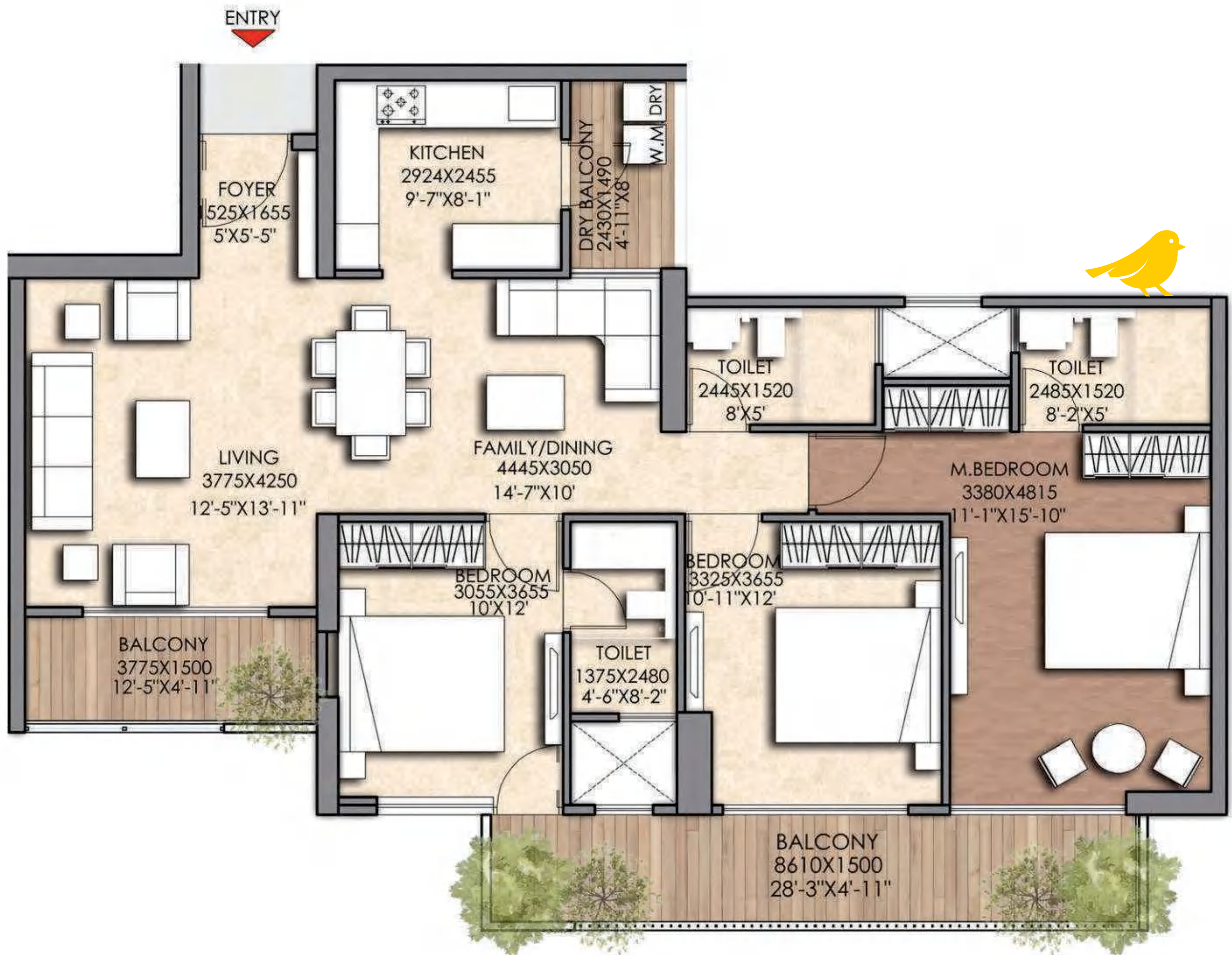


Master plan

unit
and
cluster
plans



Unit Plan

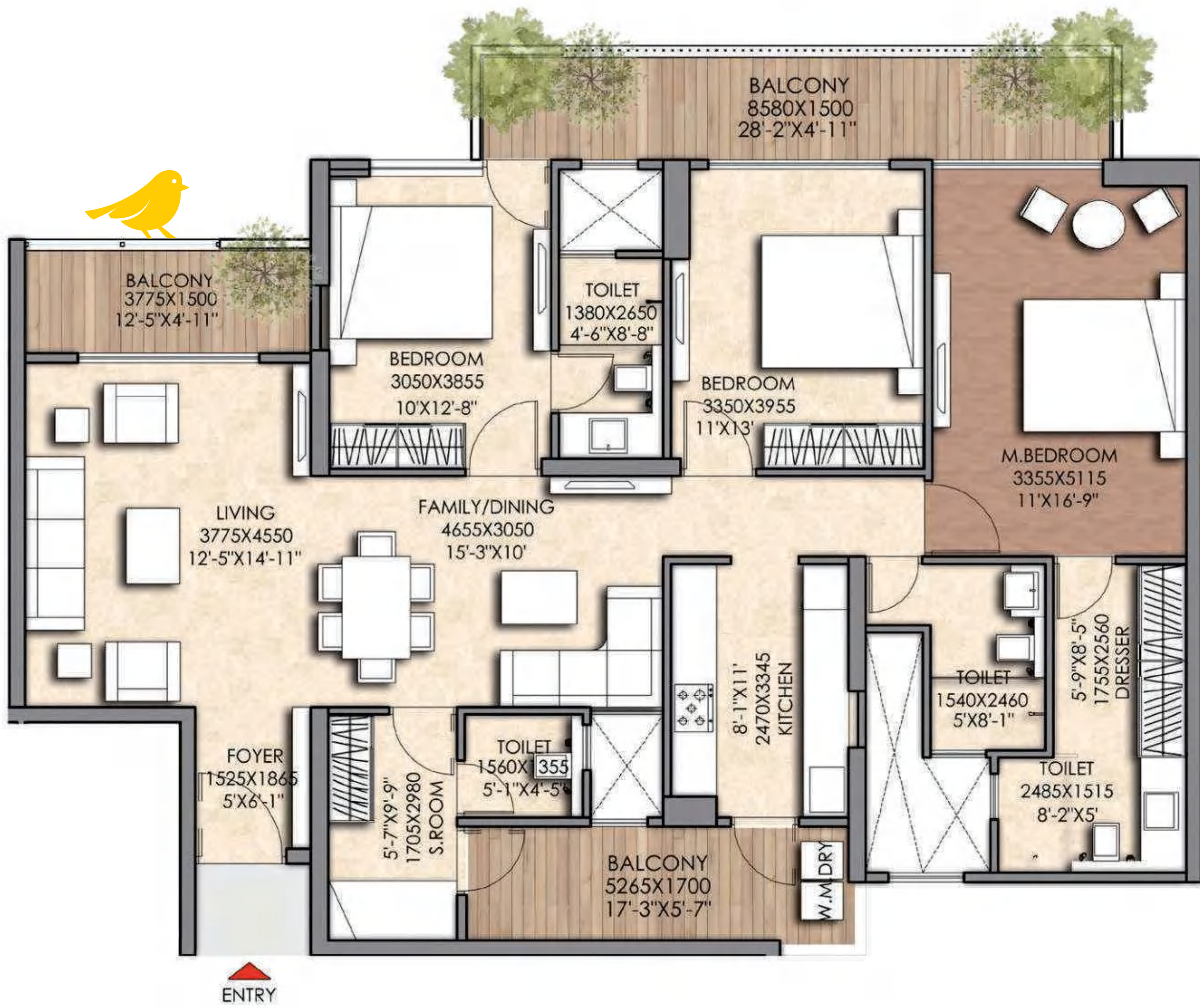


3 BHK (Elite)

Total Area = 1700.00 sq. ft.
 Built-up Area = 1379.68 sq. ft.
 Carpet Area = 1138.84 sq. ft.
 Balcony Area = 240.84 sq. ft.

- 3 Bedrooms
- 3 Toilets
- Living Room
- Dining Room
- Kitchen with Dry Balcony
- Balconies

Unit Plan



3 BHK (Deluxe)

Total Area = 2040.00 sq. ft.
 Built-up Area = 1636.20 sq. ft.
 Carpet Area = 1346.20 sq. ft.
 Balcony Area = 290.00 sq. ft.

- 3 Bedrooms
- 4 Toilets
- Living Room
- Dining Room
- Servant/Study Room
- Kitchen with Dry Balcony
- Balconies

Cluster Plan

Tower A - 1st to 28th Floor

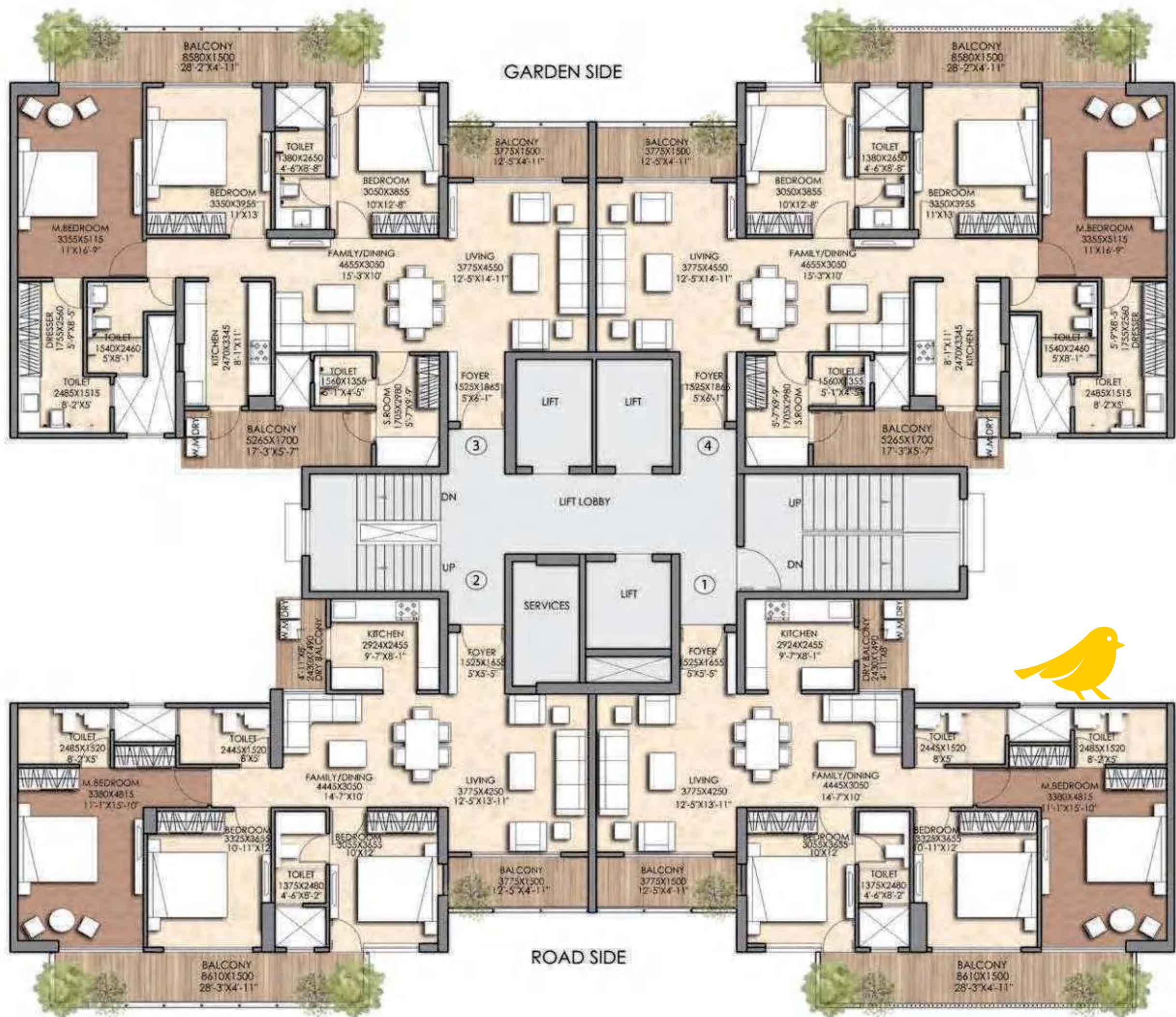
3 BHK (Deluxe)

Total Area = 2040.00 sq. ft.

Built-up Area = 1636.20 sq. ft.

Carpet Area = 1346.20 sq. ft.

Balcony Area = 290.00 sq. ft.



3 BHK (Elite)

Total Area = 1700.00 sq. ft.

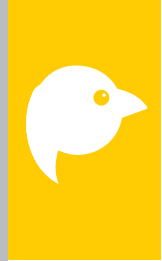
Built-up Area = 1379.68 sq. ft.

Carpet Area = 1138.84 sq. ft.

Balcony Area = 240.84 sq. ft.

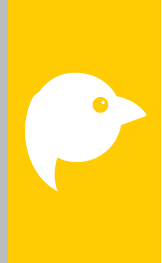
Cluster Plan

Tower B & C - 1st to 29th Floor



3 BHK (Deluxe)

Total Area = 2040.00 sq. ft.
 Built-up Area = 1636.20 sq. ft.
 Carpet Area = 1346.20 sq. ft.
 Balcony Area = 290.00 sq. ft.



3 BHK (Elite)

Total Area = 1700.00 sq. ft.
 Built-up Area = 1379.68 sq. ft.
 Carpet Area = 1138.84 sq. ft.
 Balcony Area = 240.84 sq. ft.

Unit Plan

Floors : 1st, 3rd, 5th, 7th, 9th, 11th, 14th, 16th, 18th, 20th, 22th, 24th, 26th & 28th



3 BHK (Luxury)

Total Area = 2555.00 sq. ft.

Built-up Area = 2057.59 sq. ft.

Carpet Area = 1618.88 sq. ft.

Balcony Area = 438.71 sq. ft.

- 3 Bedrooms
- 4 Toilets
- Living Room
- Dining Room
- Servant/Study Room
- Kitchen with Dry Balcony
- Balconies

Unit Plan

Floors : 2nd, 4th, 6th, 8th, 10th, 12th, 15th, 17th, 19th, 21st, 23rd, 25th, 27th & 29th



3 BHK (Luxury)

Total Area = 2555.00 sq. ft.

Built-up Area = 2057.59 sq. ft.

Carpet Area = 1618.88 sq. ft.

Balcony Area = 438.71 sq. ft.

- 3 Bedrooms
- 4 Toilets
- Living Room
- Dining Room
- Servant/Study Room
- Kitchen with Dry Balcony
- Balconies

Cluster Plan

Tower D,E & H,I

Floors : 1st, 3rd, 5th, 7th, 9th, 11th, 14th, 16th, 18th, 20th, 22th, 24th, 26th & 28th



3 BHK (Luxury)

Total Area = 2555.00 sq. ft.

Built-up Area = 2057.59 sq. ft.

Carpet Area = 1618.88 sq. ft.

Balcony Area = 438.71 sq. ft.

Cluster Plan

Tower D,E & H,I

Floors : 2nd, 4th, 6th, 8th, 10th, 12th, 15th, 17th, 19th, 21st, 23rd, 25th, 27th & 29th



3 BHK (Luxury)

Total Area = 2555.00 sq. ft.

Built-up Area = 2057.59 sq. ft.

Carpet Area = 1618.88 sq. ft.

Balcony Area = 438.71 sq. ft.

Unit Plan

Floors : 1st, 3rd, 5th, 7th, 9th, 11th, 14th, 16th, 18th, 20nd, 22th, 24th & 26th



4 BHK (Luxury)

Total Area = 3355.00 sq. ft.

Built-up Area = 2633.40 sq. ft.

Carpet Area = 2067.35 sq. ft.

Balcony Area = 566.05 sq. ft.

- 4 Bedrooms
- 5 Toilets
- Living Room
- Dining Room
- Servant/Study Room
- Kitchen with Dry Balcony
- Balconies

Unit Plan

Floors :

2nd, 4th, 6th, 8th, 10th, 12th, 15th, 17th, 19th, 21st, 23rd, 25th & 27th



4 BHK (Luxury)

Total Area = 3355.00 sq. ft.

Built-up Area = 2633.40 sq. ft.

Carpet Area = 2067.35 sq. ft.

Balcony Area = 566.05 sq. ft.

- 4 Bedrooms
- 5 Toilets
- Living Room
- Dining Room
- Servant/Study Room
- Kitchen with Dry Balcony
- Balconies

Cluster Plan

Tower F & G

Floors : 1st, 3rd, 5th, 7th, 9th, 11th, 14th, 16th, 18th, 20nd, 22th, 24th & 26th



4 BHK (Luxury)

Total Area = 3355.00 sq. ft.

Built-up Area = 2633.40 sq. ft.

Carpet Area = 2067.35 sq. ft.

Balcony Area = 566.05 sq. ft.

Cluster Plan

Tower F & G

Floors : 2nd, 4th, 6th, 8th, 10th, 12th, 15th, 17th, 19th, 21st, 23rd, 25th & 27th



4 BHK (Luxury)

Total Area = 3355.00 sq. ft.

Built-up Area = 2633.40 sq. ft.

Carpet Area = 2067.35 sq. ft.

Balcony Area = 566.05 sq. ft.

Cluster Plan

Lower Duplex Plan Tower F & G



TYPE	FLOOR	CARPET AREA	BALCONY AREA	BUILT-UP AREA	TOTAL AREA
		SQ.FT.	SQ.FT.	SQ.FT.	SQ.FT.
DUPLEX PENT HOUSE	LOWER DUPLEX	2025.70	731.90	2757.60	6100
	UPPER DUPLEX	1725.94	398.95	2124.89	
TOTAL BUILT-UP AREA				4882.49	

Cluster Plan

Upper Duplex Plan Tower F & G

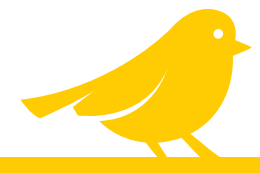


Total Area = 6100.00 sq. ft.



specifications 

Specifications



Living / Dining

Walls	POP Punning Work and Oil Bound Distemper
Floor	High - End Vitrified Tiles
Ceiling	POP Punning Work and Oil Bound Distemper
Doors	Designer Entry Door of 8 Feet Height
Windows	Anodized Aluminium Windows / UPVC
Sanitary Ware (Fixtures & Fittings)	_____
Electrical (Fixtures & Fittings)	Modular Electric Switches

Master bedroom

Walls	POP Punning Work and Oil Bound Distemper
Floor	Laminated Wooden Flooring
Ceiling	POP Punning Work and Oil Bound Distemper
Doors	Skin Moulded Paneled Door/ Laminated Flush Door
Windows	Anodized Aluminium Windows / UPVC
Sanitary Ware (Fixtures & Fittings)	_____
Electrical (Fixtures & Fittings)	Modular Electric Switches

Specifications



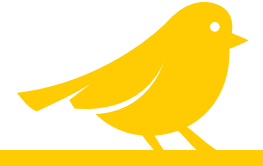
Bedrooms

Walls	POP Punning Work and Oil Bound Distemper
Floor	High - End Vitrified Tiles
Ceiling	POP Punning Work and Oil Bound Distemper
Doors	Skin Moulded Paneled Door/ Laminated Flush Door
Windows	Anodized Aluminium Windows/ UPVC
Sanitary Ware (Fixtures & Fittings)	_____
Electrical (Fixtures & Fittings)	Modular Electric Switches

Toilets

Walls	Ceramic Tiles clad up to 7 Feet Height
Floor	Anti Skid Ceramic Tiles
Ceiling	POP Punning Work and Oil Bound Distemper
Doors	Skin Moulded Paneled Door/ Laminated Flush Door
Windows	Anodized Aluminium Windows / UPVC
Sanitary Ware (Fixtures & Fittings)	W.C., Washbasin & C.P. fittings.
Electrical (Fixtures & Fittings)	Modular Electric Switches

Specifications



Kitchen

Walls	Ceramic Tiles Cladded up to 2 Feet Height above Granite Counter
Floor	High - End Vitrified Tiles
Ceiling	POP Punning Work and Oil Bound Distemper
Doors	Powder Coated Aluminium Door/ UPVC Door
Windows	Anodized Aluminium Windows/ UPVC
Sanitary Ware (Fixtures & Fittings)	C.P. fittings with Double Bowl Stainless Steel Sink.
Electrical (Fixtures & Fittings)	Modular Electric Switches

Balconies

Walls	External Weather Proof Paint
Floor	Anti Skid Ceramic Tiles
Ceiling	_____
Doors	Powder Coated Aluminium Door/ UPVC Door
Windows	Anodized Aluminium Windows / UPVC
Sanitary Ware (Fixtures & Fittings)	_____
Electrical (Fixtures & Fittings)	Modular Electric Switches

Specifications



Servant / study room

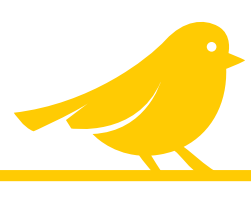
Walls	POP Punning Work and Oil Bound Distemper
Floor	High - End Vitrified Tiles
Ceiling	POP Punning Work and Oil Bound Distemper
Doors	Skin Moulded Paneled Door/ Laminated Flush Door
Windows	Anodized Aluminium Windows/ UPVC
Sanitary Ware (Fixtures & Fittings)	_____
Electrical (Fixtures & Fittings)	Modular Electric Switches

Servant / study toilet

Walls	Ceramic Tiles
Floor	Anti Skid Ceramic Tiles
Ceiling	POP Punning Work and Oil Bound Distemper
Doors	Skin Moulded Paneled Door/ Laminated Flush Door
Windows	Anodized Aluminium Windows / UPVC
Sanitary Ware (Fixtures & Fittings)	W.C., Washbasin & C.P. fittings
Electrical (Fixtures & Fittings)	Modular Electric Switches

Notes: The colour and design of the tiles can be changed without any prior notice • Variation in the colour and size of vitrified tiles/granite may occur • Variation in the colour of mica may occur • Area in all catagories of apartments may very up to $\pm 3\%$ without any change in cost, however, in case if the variation is beyond $\pm 3\%$ charges are applicable.

Location Map



SCAN THE CODE FOR LOCATION



Uncage your trust

DELIVERED PROJECT

Prateek The Royal Cliff
at Crossings Republik, NH 24

Prateek Fedora
Sector-61, Noida

Prateek Laurel
Sector-120, Noida

Prateek Wisteria
Sector-77, Noida

Prateek Stylome
Sector-45, Noida

Prateek Edifice
Sector-107, Noida

ONGOING PROJECT

Grand Carnesia

& Grand Paeonia

at Prateek Grand City
Ghaziabad, NH-9 (NH 24)

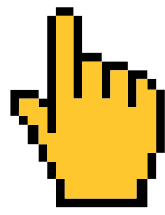
Prateek Canary
Sector-150, Noida



Strongbiz Propbuild Pvt. Ltd.
Site Office: SC-02/A7, Sector-150, Noida

Corp./Regd. Office:
Prateek Pro Menage, A-42, Sec-67, Noida-201301

Website: www.prateekgroup.com



Follow us on   

RERA No. UPRERAPRJ591510 | <http://up-rera.in>

CIN No. U70102UP2016PTC077239 | **GST No.** 09AAWCS8649A1ZP

The brochure is purely conceptual and not a legal offering. The elevation, colour schemes and or exterior appearances specifications, design, layouts, 3D perspective views & stoke images used in this e-brochure are indicative and can be changed at the sole discretion of the builder.